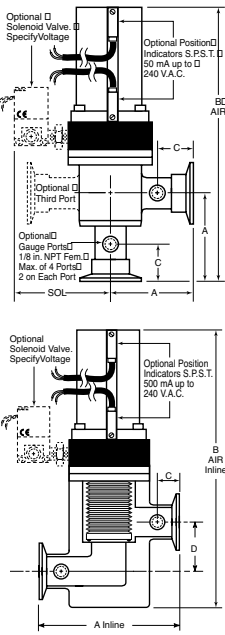




- Less Outgassing Than Stainless, See Page 40
- Aluminum or 304 Stainless Steel Bodies
- Leak Tested to Better Than 5×10^{-10} scc/s
- Select Welded Bellows or O-Ring Stem Seals
- Viton® Seat And Bonnet Seal Are Standard
- Kalrez® Seat & Bonnet Seals Also Available
- Gauge Fittings Available On Either Port
- Failsafe; Choose Spring Close Or Air Close
- All Valves (RoHS) 2015/863/EU Compliant

Aluminum and Stainless Steel Pneumatic or Manual Actuators, Angle or Inline Style with Port Sizes from NW-16 To NW-50

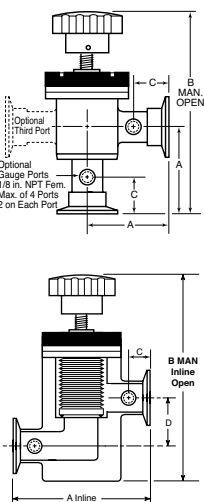


Air To Open/Spring To Close

(See "Optional Features" on next page for Air Open/Air Close or Spring to Open)

	Part Number For Inline Style replace "ANG" with "INL"	Description	Angle Style			Inline Style				
			Price	A	B Air	C	Price	A	B Air	D
Bellows Stem Seal 1,000,000 Cycles	SS-BEL-ANG-75-AIR	No Flanges, 0.75 O.D.	\$378	2.1	6.2	.85	\$385	4.2	5.9	1.1
	SS-BEL-ANG-133-AIR	1.33 CF on Both Ports	\$418	2.1	6.2	.85	\$429	4.2	5.9	1.1
	SS-BEL-ANG-16-AIR	NW-16 on Both Ports	\$471	2.1	6.2	.85	\$477	4.2	5.9	1.1
	ALUM-BEL-ANG-16-AIR	Aluminum Body, NW-16	\$355	2.1	6.2	.85	\$386	4.2	5.9	1.1
	SS-BEL-ANG-1.0-AIR	No Flanges, 1.00 O.D.	\$449	2.0	5.9	.82	\$434	4.0	6.1	1.4
	SS-BEL-ANG-212-AIR	2.12 CF on Both Ports	\$471	2.0	5.9	.82	\$477	4.0	6.1	1.4
	SS-BEL-ANG-25-AIR	NW-25 on Both Ports	\$471	2.0	5.9	.82	\$477	4.0	6.1	1.4
	ALUM-BEL-ANG-25-AIR	Aluminum Body, NW-25	\$403	2.0	5.9	.82	\$401	4.0	6.1	1.4
	SS-BEL-ANG-1.5-AIR	No Flanges, 1.50 O.D.	\$504	2.4	7.8	.90	\$534	4.8	8.4	1.9
	SS-BEL-ANG-275-AIR	2.75 CF on Both Ports	\$518	2.4	7.8	.90	\$477	4.8	8.4	1.9
	SS-BEL-ANG-40-AIR	NW-40 on Both Ports	\$518	2.4	7.8	.90	\$540	4.8	8.4	1.9
	ALUM-BEL-ANG-40-AIR	Aluminum Body, NW-40	\$475	2.4	7.8	.90	\$527	4.8	8.4	1.9
O-Ring Stem Seal 250,000 Cycles	SS-BEL-ANG-2.0-AIR	No Flanges, 2.00 O.D.	\$644	3.4	10.3	1.14	\$679	6.8	11.0	2.6
	SS-BEL-ANG-338-AIR	3.38 CF on Both Ports	\$651	3.4	10.3	1.14	\$686	6.8	11.0	2.6
	SS-BEL-ANG-50-AIR	NW-50 on Both Ports	\$651	3.4	10.3	1.14	\$686	6.8	11.0	2.6
	ALUM-BEL-ANG-50-AIR	Aluminum Body, NW-50	\$633	3.4	10.3	1.14	\$639	6.8	11.0	2.6
	ALUM-O-ANG-16-AIR	Aluminum NW-16	\$339	1.6	5.6	.85	\$339	4.2	5.9	1.1
	ALUM-O-ANG-25-AIR	Body with NW-25	\$355	2.0	5.9	.82	\$364	4.0	6.1	1.4
ALUM-O-ANG-40-AIR	O-Ring NW-40	\$459	2.6	7.8	.90	\$473	4.8	8.4	1.9	
ALUM-O-ANG-50-AIR	Shaft Seal NW-50	\$563	2.8	9.7	1.14	\$576	6.8	11.0	2.6	

Manual Valves



	Part Number For Inline Style replace "ANG" with "INL"	Description	Angle Style			Inline Style				
			Price	A	B Man	C	Price	A	B Man	D
Bellows Stem Seal 1,000,000 Cycles	SS-BEL-ANG-75-MAN	No Flanges, 0.75 O.D.	\$351	2.1	6.2	.85	\$398	4.2	5.9	1.1
	SS-BEL-ANG-133-MAN	1.33 CF on Both Ports	\$370	2.1	6.2	.85	\$400	4.2	5.9	1.1
	SS-BEL-ANG-16-MAN	NW-16 on Both Ports	\$370	2.1	6.2	.85	\$400	4.2	5.9	1.1
	ALUM-BEL-ANG-16-MAN	Aluminum Body, NW-16	\$339	2.1	6.2	.85	\$368	4.2	5.9	1.1
	SS-BEL-ANG-1.0-MAN	No Flanges, 1.00 O.D.	\$351	2.0	5.9	.82	\$408	4.0	6.0	1.3
	SS-BEL-ANG-212-MAN	2.12 CF on Both Ports	\$386	2.0	5.9	.82	\$415	4.0	6.0	1.3
	SS-BEL-ANG-25-MAN	NW-25 on Both Ports	\$386	2.0	5.9	.82	\$415	4.0	6.0	1.3
	ALUM-BEL-ANG-25-MAN	Aluminum Body, NW-25	\$364	2.0	5.9	.82	\$408	4.0	6.0	1.3
	SS-BEL-ANG-1.5-MAN	No Flanges, 1.50 O.D.	\$524	2.4	7.8	.90	\$524	4.8	8.4	2.6
	SS-BEL-ANG-275-MAN	2.75 CF on Both Ports	\$386	2.4	7.8	.90	\$415	4.8	8.4	1.9
	SS-BEL-ANG-40-MAN	NW-40 on Both Ports	\$534	2.4	7.8	.90	\$534	4.8	8.4	1.9
	ALUM-BEL-ANG-40-MAN	Aluminum Body, NW-40	\$524	2.4	7.8	.90	\$524	4.8	8.4	1.9
O-Ring Stem Seal 250,000 Cycles	SS-BEL-ANG-2.0-MAN	No Flanges, 2.00 O.D.	\$576	3.4	9.9	1.14	\$576	6.8	10.6	2.6
	SS-BEL-ANG-338-MAN	3.38 CF on Both Ports	\$643	3.4	9.9	1.14	\$598	6.8	10.6	2.6
	SS-BEL-ANG-50-MAN	NW-50 on Both Ports	\$630	3.4	9.9	1.14	\$598	6.8	10.6	2.6
	ALUM-BEL-ANG-50-MAN	Aluminum Body, NW-50	\$576	2.8	9.9	1.14	\$547	6.8	10.6	2.6
	ALUM-O-ANG-16-MAN	Aluminum NW-16	\$315	1.6	5.6	.85	\$341	4.2	5.9	1.1
	ALUM-O-ANG-25-MAN	Body with NW-25	\$346	2.0	5.8	.82	\$370	4.0	6.0	1.3
ALUM-O-ANG-40-MAN	O-Ring NW-40	\$459	2.6	7.8	.90	\$473	4.8	8.4	1.9	
ALUM-O-ANG-50-MAN	Shaft Seal NW-50	\$533	2.8	9.3	1.14	\$502	6.8	10.6	2.6	

3 Way Valves, Manual or Air Operated



Photo shows an NW-40 valve with optional position indicators on one side and one optional gauge port. Up to 3 gauge ports available at \$28. each.

Aluminum bodies with bellows shaft seal. The standard pneumatic actuator is air to open, spring to close. Other options such as gauge ports and position indicators are available. Two 3-way solenoids required. See below for cost of solenoids.

NW-16, P/N: 3W-ALUM-BEL-16AIR	\$762
NW-25, P/N: 3W-ALUM-BEL-25AIR	\$788
NW-40, P/N: 3W-ALUM-BEL-40AIR	\$869
NW-50, P/N: 3W-ALUM-BEL-50AIR	\$981
NW-16, P/N: 3W-ALUM-BEL-16AIR	\$719
NW-25, P/N: 3W-ALUM-BEL-25AIR	\$739
NW-40, P/N: 3W-ALUM-BEL-40AIR	\$818
NW-50, P/N: 3W-ALUM-BEL-50AIR	\$911
1/8" NPT GAUGE PORTS, Specify Location	\$37

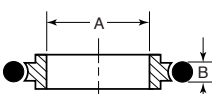
VCR or 1/8 Inch NPT Ports For Gauge Tubes

VCR-4 or 1/8 inch NPT female ports can be provided on the end or side valve ports. Any number of these ports in any combination can be specified by adding the appropriate suffix to the part number. For example, 1/8 RS suffix would specify a 1/8 inch NPT port on the right of the side port.

1/8 NPT Port Add: SS valves \$104

VCR Port Add: Stainless Steel Only \$145

Position Reference		P/N for 1/8 NPT Port	PN for VCR Port
RS	Right Side Port	H700020	H700033
LS	Left Side Port	H700021	H700034
RB	Right Bottom Port	H700022	H700035
LB	Left Bottom Port	H700023	H700036



Centering Rings

304 Stainless Steel With Viton O-Rings (Buna-N O-Rings Available)

Flange Size	A	B	Part No	Price
NW-16	0.63 (16)	0.21 (5.3)	CTR-RING 16	\$6.00
NW-25	0.984 (25)	0.21 (5.3)	CTR-RING 25	\$7.00
NW-40	1.575 (40)	0.21 (5.3)	CTR-RING 40	\$10.00
NW-50	1.969 (50)	0.21 (5.3)	CTR-RING 50	\$12.00

Position Indicators

Pneumatically activated valves can be equipped with a pair of SPST switches to indicate valve open and closed. These unpowered switches have contacts rated for up to 500 mA at up to 240 VAC, non-inductive.

Add the suffix 'PI'. (Open & Closed). . . Add \$128/pair

Optional Third Port for Angle or Inline Valves



Standard angle valves have two ports: one bottom and one side. To add an additional side port for vacuum gauge tube installation, specify the optional third port by simply adding the suffix "3-Port" to any valve part number and add the cost shown below:

NW-16.....add \$126	NW40.....add \$187
NW-25.....add \$164	NW40.....add \$241

Spring to Open/Air to Close

For this option, add "SO" to the P/N & add cost below:

NW-16 add \$62	NW-25 add \$62
NW-40 add \$117	NW-50 add \$127

Air to Open/Air To Close

Standard valves use air to open and spring to close but as an option the valves can be built for air to open and close. Add the suffix 'AC' to the part number. Note that with this option a 4 way solenoid is required.

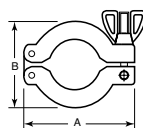
Air To Close and Open P/N: H700024.....Add \$77

1/8 NPT/ISO Adapter Fitting for Air P/N: H700032. N/C

Solenoids For Pneumatic Valves

Because many customers use central air manifolds to activate valves we offer these solenoids as an optional rather than standard feature. Solenoids are specified by adding a suffix to Valve part number below.

3 Way for Standard, Spring to Close Valves.....\$84		4 Way for Air Open/Air Close Valves.....\$121	
SOL-120 VAC	X134003	SOL-120 VAC	X703005
SOL-230 VAC	X134013	SOL-230 VAC	X134010
SOL-24 VDC	X-134032	SOL-24 VAC	X703041



Clamps

Aluminum Clamps With Wing Nut & Screw Fastener

Flange Size	A	B	Thickness	Part No	Price
NW-16	2.24 (57)	1.69 (43)	0.63 (16)	AL-Clamp 16	\$6.00
NW-25	2.76 (70)	2.17 (55)	0.63 (16)	AL-Clamp 25	\$7.00
NW-40	3.39 (88)	3.39 (88)	0.63 (16)	AL-Clamp 40	\$8.00
NW-50	4.33 (110)	4.33 (110)	0.79 (20)	AL-Clamp 50	\$12.00