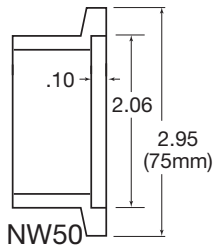
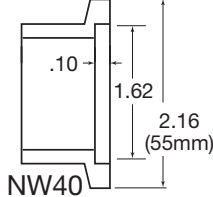
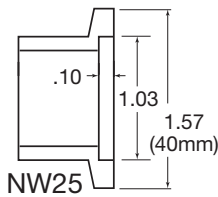
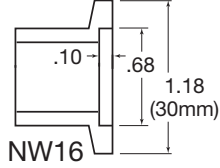
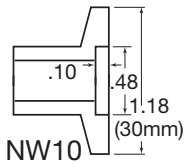




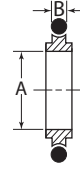
NW Style Clamps, Centering Rings, Hose and Bellows

NW Style Flange Dimensions

May Still be Referred to as 'KF' or 'QF' Style



Centering Rings, SS, Viton O-Ring

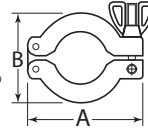


Flange	A	B	Part No.	Price
NW 16	0.63 (16)	0.21 (53)	CTR-RING-16	\$4.00
NW 25	0.984 (25)	0.21 (53)	CTR-RING-25	\$5.00
NW 40	1.575 (40)	0.21 (53)	CTR-RING-40	\$7.00
NW 50	1.969 (50)	0.21 (53)	CTR-RING-50	\$9.00

Replacement Viton O-Rings

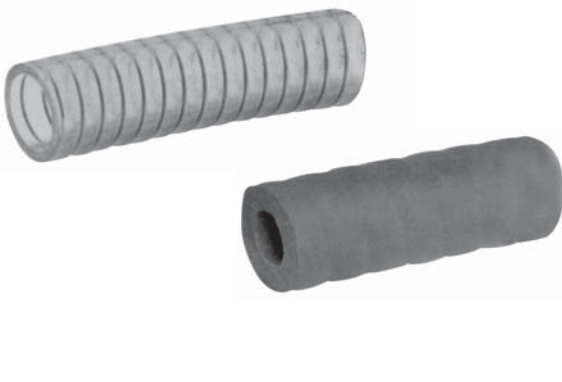
Part No.	Pack of 5
X701314V	\$8.00
X701320V	\$13.00
X701326V	\$17.00
X701330V	\$19.00

Clamps, Cast Aluminum



Flange	A	B	Thickness	Part No.	Price
NW 16	2.24 (57)	1.69 (43)	0.63 (16)	AL-CLAMP-16	\$4.00
NW 25	2.76 (70)	2.17 (55)	0.63 (16)	AL-CLAMP-25	\$5.00
NW 40	3.39 (88)	2.76 (70)	0.63 (16)	AL-CLAMP-40	\$6.00
NW 50	4.33 (110)	3.70 (94)	0.79 (20)	AL-CLAMP-50	\$8.00

Rubber and PVC Vacuum Hose

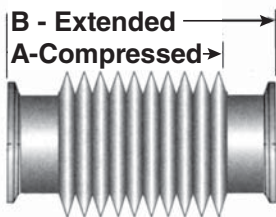


Hose Material	Hose I.D.	Hose O.D.	Part No.	Price
Rubber	.188 "	.563 "	HOSE-RUB-3/16"	\$8.00/Foot
Rubber	.25 "	.625 "	HOSE-RUB-1/4"	\$14.00/Foot
Rubber	.75 "	1.5 "	HOSE-RUB-3/4"	\$13.00/Foot
Rubber	1 "	2 "	HOSE-RUB-1"	\$22.00/Foot
Reinforced PVC	1.5 "	1.8125 "	HOSE-PVC-1.5"	\$13.00/Foot
Reinforced PVC	2 "	2.375 "	HOSE-PVC-2"	\$16.00/Foot

Stainless Steel Hose Clamps

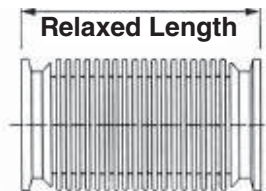
Hose I.D.	Part No.	Price
For 1.5 " O.D. Rubber Hose	HOSE CLAMP 1.5	\$3.00
For 2 " O.D. Rubber Hose	HOSE CLAMP 2.0	\$2.00
For 1.8 " O.D. PVC Hose	HOSE CLAMP 2.0	\$2.50
For 2.4 " O.D. PVC Hose	HOSE CLAMP 2.5	\$2.50

Compressible/Formatted Bellows



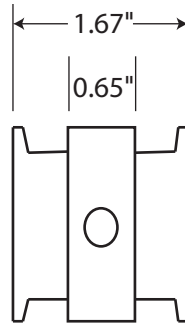
Flange	Material	A mm	B mm	Part No.	Price
NW 16	304 S.S.	80	100	COMP-BEL-16-100	\$212.00
NW 25	304 S.S.	80	100	COMP-BEL-25-100	\$130.00
NW 40	304 S.S.	80	100	COMP-BEL-40-100	\$140.00
NW 50	304 S.S.	80	100	COMP-BEL-50-100	\$160.00

Formatted Stainless Steel Bellows



250 mm (10 inches)		500 mm (19 inches)		1000 mm (38 inches)	
Part No.	Price	Part No.	Price	Part No.	Price
BEL-16-250	\$60.00	BEL-16-500	\$98.00	BEL-16-1000	\$117.00
BEL-25-250	\$75.00	BEL-25-500	\$98.00	BEL-25-1000	\$122.00
BEL-40-250	\$95.00	BEL-40-500	\$134.00	BEL-40-1000	\$190.00
BEL-50-250	\$125.00	BEL-50-500	\$143.00	BEL-50-1000	\$202.00

Gauge Tube Spool Piece

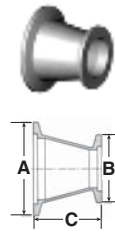


These small aluminum spool pieces make it easy to install 1/8 NPT or VCR-4 vacuum sensors into any system using NW style flanges. Other special connections can be provided. Two (2) ports are standard with up to four (4) available.

Flange	Part No. for 1/8 NPT Ports	Price
NW 16	SPOOL PC - 16 - 1/8 NPT	\$65.
NW 25	SPOOL PC - 25 - 1/8 NPT	\$80.
NW 40	SPOOL PC - 40 - 1/8 NPT	\$95.
NW 50	SPOOL PC - 50 - 1/8 NPT	\$105.

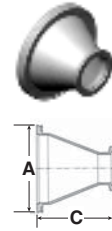
Flange	Part No. for VCR Ports	Price
NW 16	SPOOL PC - 16 - VCR 4 MALE	\$125.
NW 25	SPOOL PC - 25 - VCR 4 MALE	\$140.
NW 40	SPOOL PC - 40 - VCR 4 MALE	\$155.
NW 50	SPOOL PC - 50 - VCR 4 MALE	\$165.

NW-NW Conical Reducers



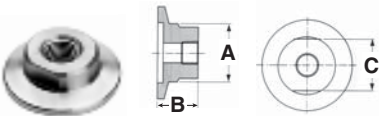
Flange	Material	A	B	C	Part No.	Price
NW25 / NW16	Aluminum	40	30	40	CONRED-NW-25-16	\$43.
NW40 / NW16	Aluminum	55	30	40	CONRED-NW-40-16	\$49.
NW40 / NW25	Aluminum	55	40	40	CONRED-NW-40-25	\$52.
NW50 / NW16	Aluminum	75	30	40	CONRED-NW-50-16	\$58.
NW50 / NW25	Aluminum	75	40	40	CONRED-NW-50-25	\$62.
NW50 / NW40	Aluminum	75	55	40	CONRED-NW-50-40	\$64.

ISO-NW Conical Reducers



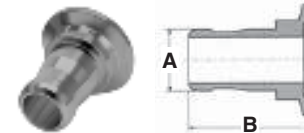
Flange	Material	A	B	C	Part No.	Price
ISO80/NW40	Aluminum	110	55	63	CONRED-80/NW40	\$150.
ISO100/NW40	Aluminum	130	55	63	CONRED-100/NW40	\$175.
ISO80/NW50	Aluminum	110	75	63	CONRED-80/NW50	\$160.
ISO100/NW50	Aluminum	130	75	63	CONRED-100/NW50	\$190.
ISO63/NW25	Aluminum	95	40	63	CONRED-63/NW25	\$120.
ISO63/NW40	Aluminum	95	55	63	CONRED-63/NW40	\$130.
ISO63/NW50	Aluminum	95	75	63	CONRED-80/NW50	\$140.

NW Female Pipe Adaptors



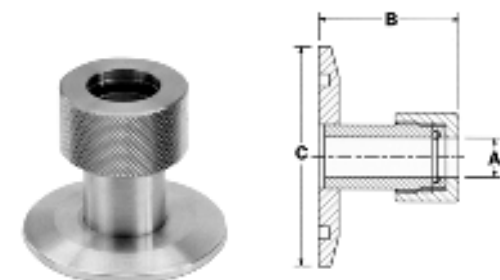
Flange	Material	A	B	C	Part No.	Price
NW16/1/8" FNPT	Aluminum	19.05	25	17	NW16/1/8"FNPT-ADP	\$23.
NW16/1/4" FNPT	Aluminum	19.05	25	17	NW16/1/4"FNPT-ADP	\$23.
NW25/1/8" FNPT	Aluminum	25.4	25	19	NW25/1/8"FNPT-ADP	\$25.
NW25/1/4" FNPT	Aluminum	25.4	25	19	NW25/1/4"FNPT-ADP	\$25.
NW40/1/8" FNPT	Aluminum	38.1	25	32	NW40/1/8"FNPT-ADP	\$28.
NW40/1/4" FNPT	Aluminum	38.1	25	32	NW40/1/4"FNPT-ADP	\$28.
NW40/1/2" FNPT	Aluminum	38.1	25	32	NW40/1/2"FNPT-ADP	\$28.
NW50/1/8" FNPT	Aluminum	50.8	25	46	NW50/1/8"FNPT-ADP	\$38.
NW50/1/4" FNPT	Aluminum	50.8	25	46	NW50/1/4"FNPT-ADP	\$38.
NW50/2" FNPT	304 SS	75	79	63	NW50/2"FNPTSS-ADP	\$260.

NW Rubber Hose Adaptor



Flange	Material	A (inch)	B (inch)	Part No.	Price
NW16	Aluminum	6.4 (.25)	19 (.75)	NW16-HOSE-0.25	\$18.
NW16	Aluminum	9.6 (.38)	19 (.75)	NW16-HOSE-0.38	\$18.
NW16	Aluminum	12.5 (.50)	19 (.75)	NW16-HOSE-0.50	\$18.
NW16	Aluminum	19 (.75)	40 (1.57)	NW16-HOSE-.75	\$18.
NW25	Aluminum	6.35 (.25)	19 (.75)	NW25-HOSE-.25	\$20.
NW25	Aluminum	9.5 (.38)	19 (.75)	NW25-HOSE-0.38	\$20.
NW25	Aluminum	12.7 (.50)	19 (.75)	NW25-HOSE-.50	\$20.
NW25	Aluminum	15.9 (.625)	57 (2.25)	NW25-HOSE-.625	\$20.
NW25	Aluminum	19 (.75)	40 (1.57)	NW25-HOSE-.75	\$20.
NW25	Aluminum	22.2 (.875)	40 (1.57)	NW25-HOSE-.875	\$20.
NW25	Aluminum	26.7 (1.05)	40.6 (1.6)	NW25-HOSE-1.0	\$20.
NW40	Aluminum	39 (1.55)	40 (1.57)	NW40-HOSE-1.55	\$27.
NW40	Aluminum	41.3 (1.625)	40 (1.57)	NW40-HOSE-1.6	\$27.
NW50	Aluminum	47.7 (1.875)	40 (1.57)	NW50-HOSE-1.9	\$37.
NW50	Aluminum	50.8 (2.00)	50.8 (2.00)	NW50-HOSE-2.0	\$45.

NW Quick-Connect Adaptors



Flange	Material	A	B	C	Tube Size	Part No.	Price
NW16 to 1/4" Tube	304 S.S.	6.5	33.4	30	1/4 inch	QUICK-NW16-1/4	\$50.00
NW16 to 1/2" Tube	304 S.S.	13	36.5	30	1/2 inch	QUICK-NW16-1/2	\$55.00
NW16 to 3/4" Tube	304 S.S.	19.3	44.5	30	3/4 inch	QUICK-NW16-3/4	\$60.00
NW25 to 1/2" Tube	304 S.S.	13	36.5	40	1/2 inch	QUICK-NW25-1/2	\$60.00
NW25 to 3/4" Tube	304 S.S.	19.3	44.5	40	3/4 inch	QUICK-NW25-3/4	\$65.00
NW25 to 1" Tube	304 S.S.	25.7	50.8	40	1 inch	QUICK-NW25-1	\$77.00
NW40 to 1/2" Tube	304 S.S.	13	36.5	55	1/2 inch	QUICK-NW40-1/2	\$66.00
NW40 to 3/4" Tube	304 S.S.	19.3	44.5	55	3/4 inch	QUICK-NW40-3/4	\$70.00
NW40 to 1" Tube	304 S.S.	25.7	50.8	55	1 inch	QUICK-NW40-1	\$80.00
NW40 to 1 1/2" Tube	304 S.S.	38.4	60.3	55	1 1/2 inch	QUICK-NW40-1.5	\$150.00
NW50 to 1 1/2" Tube	304 S.S.	38.4	60.3	75	1 1/2 inch	QUICK-NW50-1.5	\$170.00
NW50 to 2" Tube	304 S.S.	51	60.3	75	2 inch	QUICK-NW50-2	\$180.00



NW Style Elbows, Tees, Crosses, Full Nipples & Blank Caps

NW 45° Elbows



Flange	Material	A	Part No.	Price
NW16	304 S.S.	23	NW-16-45-ELBOW	\$40.
NW25	304 S.S.	28	NW-25-45-ELBOW	\$48.
NW40	304 S.S.	43	NW-40-45-ELBOW	\$60.
NW50	304 S.S.	51	NW-50-45-ELBOW	\$80.

NW 90° Elbows



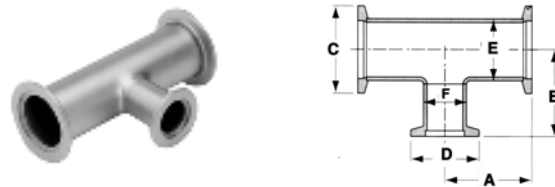
Flange	Material	A	B	C	R	Part No.	Price
NW16	304 S.S.	40	19.05	30	28.6	NW-16-90-ELBOW	\$40.
NW25	304 S.S.	50	25.4	40	38.1	NW-25-90-ELBOW	\$48.
NW40	304 S.S.	65	38.1	55	57.2	NW-40-90-ELBOW	\$60.
NW50	304 S.S.	80	50.8	75	76.2	NW-50-90-ELBOW	\$80.

NW Tees



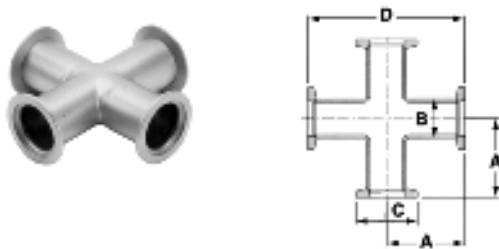
Flange	Material	A	B	C	D	Part No.	Price
NW16	304 S.S.	40	19.05	30	80	NW-16-TEE	\$55.
NW25	304 S.S.	50	25.4	40	100	NW-25-TEE	\$60.
NW40	304 S.S.	65	38.1	55	130	NW-40-TEE	\$75.
NW50	304 S.S.	70	50.8	75	140	NW-50-TEE	\$110.

NW Unequal Tees



Flange	Material	A	B	C	D	E	F	Part No.	Price
NW-25 to NW16	304 S.S.	50	40	40	30	25.4	19.05	NW-25-UT-16	\$60.
NW-40 to NW16	304 S.S.	65	40	40	100	38.1	19.05	NW-40-UT-16	\$72.
NW50 to NW16	304 S.S.	70	50	75	140	50.8	19.05	NW-50-UT-16	\$110.
NW40 to NW25	304 S.S.	65	50	55	130	38.1	25.4	NW-40-UT-25	\$80.
NW50 to NW25	304 S.S.	70	65	75	140	50.8	38.1	NW-50-UT-25	\$115.

NW 4-Way Crosses



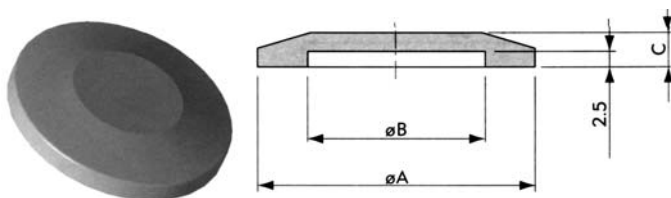
Flange	Material	A	B	C	D	Part No.	Price
NW16	304 S.S.	40	19.05	30	80	NW-16-CROSS	\$85.
NW25	304 S.S.	50	25.4	40	100	NW-25-CROSS	\$95.
NW40	304 S.S.	65	38.1	55	130	NW-40-CROSS	\$125.
NW50	304 S.S.	70	50.8	75	140	NW-50-CROSS	\$170.

NW Full Nipples



Flange	Length	Part No.	Price
NW16	80 mm	NW-16-NIPPLE-S	\$35.
NW16	320 mm	NW-16-NIPPLE-L	\$53.
NW25	100 mm	NW-25-NIPPLE-S	\$73.
NW25	320 mm	NW-25-NIPPLE-L	\$84.
NW40	130 mm	NW-40-NIPPLE-S	\$54.
NW40	320 mm	NW-40-NIPPLE-L	\$94.
NW50	140 mm	NW-50-NIPPLE-S	\$70.
NW50	320 mm	NW-50-NIPPLE-L	\$116.

Blank Caps



Flange	Outside Diam.	Material	Part No.	Price
NW-16	1.18 (30 mm)	Aluminum	Blank-16	\$6.00
NW-25	1.57 (40 mm)	Aluminum	Blank-25	\$7.00
NW-40	2.16 (55 mm)	Aluminum	Blank-40	\$8.00
NW-50	2.95 (75 mm)	Aluminum	Blank-50	\$10.00

Flange	Outside Diam.	Material	Part No.	Price
NW-16	1.18 (30 mm)	304 SS	Blank-16 SS	\$8.00
NW-25	1.57 (40 mm)	304 SS	Blank-25 SS	\$9.00
NW-40	2.16 (55 mm)	304 SS	Blank-40 SS	\$10.00
NW-50	2.95 (75 mm)	304 SS	Blank-50 SS	\$12.00