



Spare Parts Price List Rotary Vane Vacuum Pumps

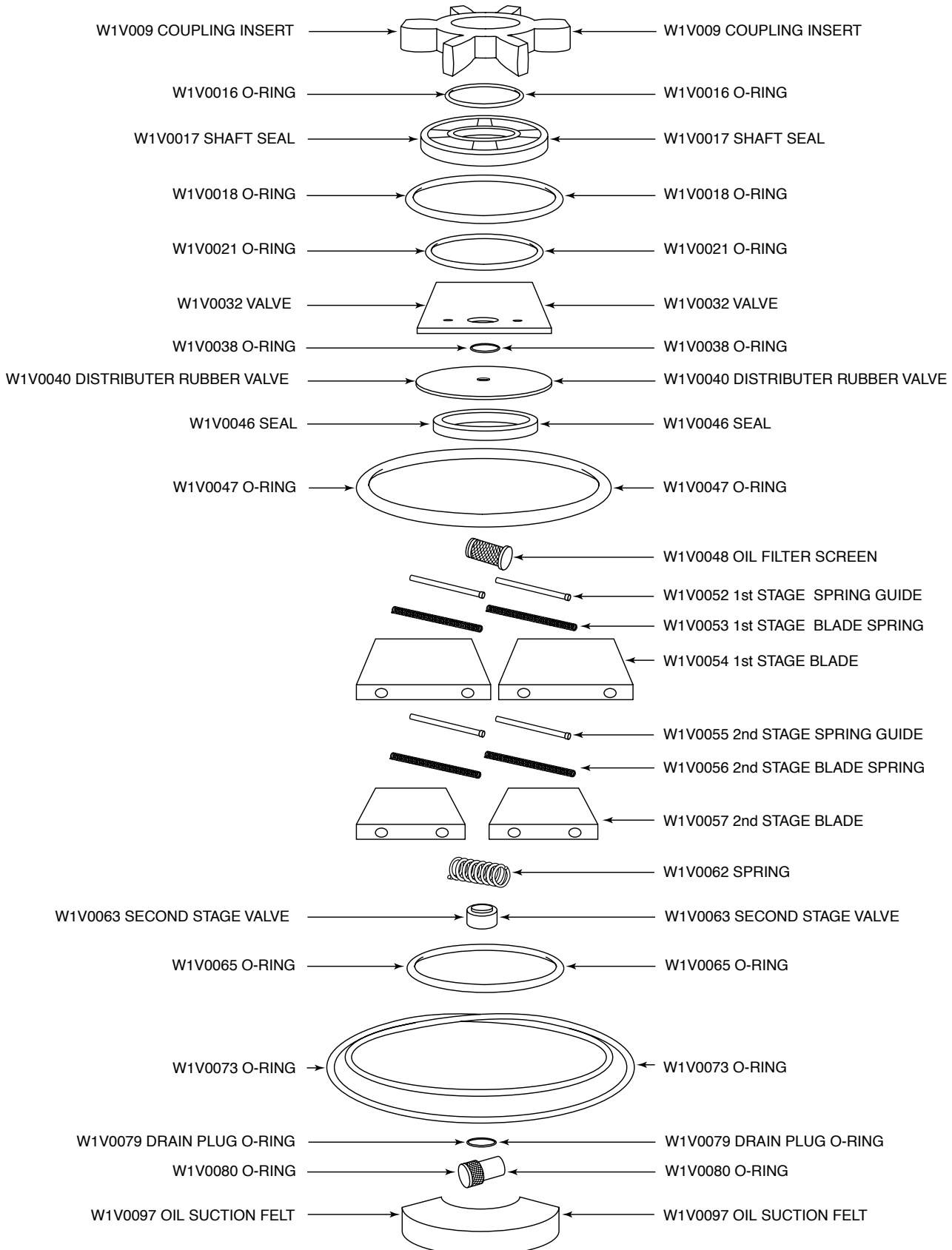
**Models: 100-3.5
200-7
400-14
600-21
800-28**

November, 2004

Minor Spare Parts Kit for Model 100-3.5.....P/N RV 900001.....\$110.
 Major Spare Parts Kit for Model 100-3.5.....P/N RV 900100.....\$195.

Minor Kit Includes:

Major Kit Includes:





Model 100-3.5 Spare Parts Price List

W2V10									
NO	PART NO.	DESCRIPTION	QTY	LIST PRICE(\$)	NO	PART NO.	DESCRIPTION	QTY	LIST PRICE(\$)
1	W1V0001	MOTOR	1	228.00	58	W1V0058	TAPPER PIN	2	8.20/PR
2	W1V0002	KEY	1	1.40/PR	59	W1V0059	DISCHARGE BAFFLE	1	12.35
3	W1V0003	MOTOR PLATE	1	55.00	60	W1V0060	BOLT	1	.50
4	W1V0004	PIN	2	1.40/PR	61	W1V0061	SPRING SUPPORT	1	1.90
5	W1V0005	FAN COVER	1	4.90	62	W1V0062	SPRING	1	1.00
6	W1V0006	HANDLE	1	11.00	63	W1V0063	2ND STAGE VALVE	1	7.80
7	W1V0007	COUPLING	1	24.00	64	W1V0064	2ND STAGE STATER	1	351.00
8	W1V0008	FAN	1	10.80	65	W1V0065	O-RING	1	2.60
9	W1V0009	COUPL JOINTING	1	6.30	66	W1V0066	O-RING	1	.50
10	W1V0010	SNAP RING	1	.70	67	W1V0067	END PLATE	1	66.00
11	W1V0011	BOLT	1	.50	68	W1V0068	O-RING	2	2.30/PR
12	W1V0012	SUCTION FELT STRAP	1	2.30	69	W1V0069	GAS BALLAST CLAMP	2	3.10/PR
13	W1V0013	SIDE COVER	1	8.50/2	70	W1V0070	OIL LEVEL BACK PLATE	1	2.10
14	W1V0014	MAIN PLATE	1	130.00	71	W1V0071	OIL LEVEL W1NDOW	1	3.60
15	W1V0015	BASEPLATE	1	18.00	72	W1V0072	O-RING	1	5.30
16	W1V0016	O-RING	1	1.50	73	W1V0073	O-RING	1	4.60
17	W1V0017	OIL SEAL	2	65.00/2	74	W1V0074	EXHAUST ASSEMBLY	1	26.00
18	W1V0018	O-RING	1	2.80	75	W1V0075	O-RING	1	1.75
19	W1V0019	SLEEVE	1	9.60	76	W1V0076	OIL FILLING PLUG	1	1.10
20	W1V0020	STRAINER	1	3.80	77	W1V0077	O-RING	1	2.00
21	W1V0021	O-RING	1	3.70	78	W1V0078	OIL BOX ASSEMBLY	1	116.00
22	W1V0022	NOT USED			79	W1V0079	O-RING	1	1.10
23	W1V0023	INTAKEFLANGE	1	51.00	80	W1V0080	OIL TRAIN PLUG	1	6.50
24	W1V0024	O-RING	2	2.20/PR	81	W1V0081	BOLT	10	1.20
25	W1V0025	BRASS PIN	2	1.20/PR	82	W1V0082	NOT USED		
26	W1V0026	GAS BALLAST SPRING	1	1.20	83	W1V0083	NAME PLATE	1	7.60
27	W1V0027	O-RING	1	.80	84	W1V0084	TERMINAL BOX	1	63.00
28	W1V0028	NOT USED			85	W1V0085	TERMINAL BOX COVER	1	5.50
29	W1V0029	GAS BALLAST KNOB	1	2.20	86	W1V0086	NAME PLATE	1	5.10
30	W1V0030	GIB TUBE ASSEMBLY	1	16.00	87	W1V0087	3 P TERMINAL	1	4.80
31	W1V0031	I' STAGE STATOR	1	368.00	88	W1V0088	ROTATION MARK	1	.50
32	W1V0032	VALVE	1	15.00	89	W1V0089	POWER CODE PROTECTOR	1	.50
33	W1V0033	VALVE BACK PLATE	1	2.50	90	W1V0090	COVER FIXING BOLT (S/W BOX)	4	1.20/4
34	W1V0034	VALVE SPACER	1	1.20	91	W1V0091	MOTOR PLATE FIXING BOLT	4	1.80/4
35	W1V0035	VALVE SPRING	1	.80	92	W1V0092	MOTOR BODY FDANG BOLT	4	2.00/4
36	W1V0036	WASHER	1	.25	93	W1V0093	HANDLE FIXING BOLT	2	1.00/2
37	W1V0037	BOLT	1	35	94	W1V0094	COUPLING FDUNG BOLT	2	.75/2
38	W1V0038	O-RING	2	.50	95	W1V0095	FAN COVER FDUNG BOLT	4	1.75/4
39	W1V0039	DISTRIBUTER SLEEVE	1	1.30	96	W1V0096	SIDE COVER FDCNT BOLT	4	2.00/4
40	W1V0040	DISTRIBUTER VALVE	1	16.00	97	W1V0097	OIL SUCTION FELT	1	2.10
41	W1V0041	DISTRIBUTER SPACER	1	1.00	98	W1V0098	SUCTION FELT FIXING BOLT	2	.50/2
42	W1V0042	DISTRIBUTER WEIGHT	1	11.80	99	W1V0099	BASE PLATE MOUNTING BOLT	4	1.75/4
43	W1V0043	SPRING	1	1.00	100	W1V0100	SUCTION FLANGE FIXING BOLT	4	1.00/4
44	W1V0044	WASHER	1	.25	101	W1V0101	VALVE OIL BAFFLE FDC BOLT	2	.75/2
45	W1V0045	VALVE OIL BAFFLE	1	1.80	102	W1V0102	VALVE GUIDE PIN (ROLL PIN)	4	1.50/4
46	W1V0046	OIL SEAL	1	32.00	103	W1V0103	I ST STATOR FIX. BOLT	3	1.80/3
47	W1V0047	O-RING	1	4.50	104	W1V0104	SPRING WASHER	3	.75/3
48	W1V0048	OIL FILTER	1	5.40	105	W1V0105	OIL STRAINER FIX. BOLT	2	.50/2
49	W1V0049	OIL FILTER FIXTURE	1	1.00	106	W1V0106	2 IID STAGE STATOR FIX. BOLT	5	2.20/5
50	W1V0050	OIL PUMP BLADE	1	8.00	107	W1V0107	NUT	2	.50/2
51	W1V0051	ROTOR ASSEMBLY	1	365.00	108	W1V0108	DISCHARGE BAFFLE FIX. BOLT	2	.50/2
52	W1V0052	1st STAGE SPRING GLTIDE	2	15.20/PR	109	W1V0109	GAS BALLAST FIXING BOLT	2	.50/2
53	W1V0053	1st STAGE BLADE SPRING	2	6.00/PR	110	W1V0110	END PLATE FIXING BOLT	4	1.90/4
54	W1V0054	1st STAGE BLADE	2	61.00/PR	111	W1V0111	OIL BOX ASSY FIXING BOLT	4	2.30/4
55	W1V0055	2ND STAGE SPRING GtqDE	2	15.50/PR	112	W1V0112	BASE RLTBBER	4	3.80/4
56	W1V0056	2ND STAGE BLADE SPRING	2	5.80/PR	113	W1V0113	O-RING	1	1.10
57	W1V0057	2ND STAGE BLADE	2	38.00/PR	114	W1V0115	SUS	1	1.80
					115	W1V0078-A	W1NDOW COVER	1	6.00



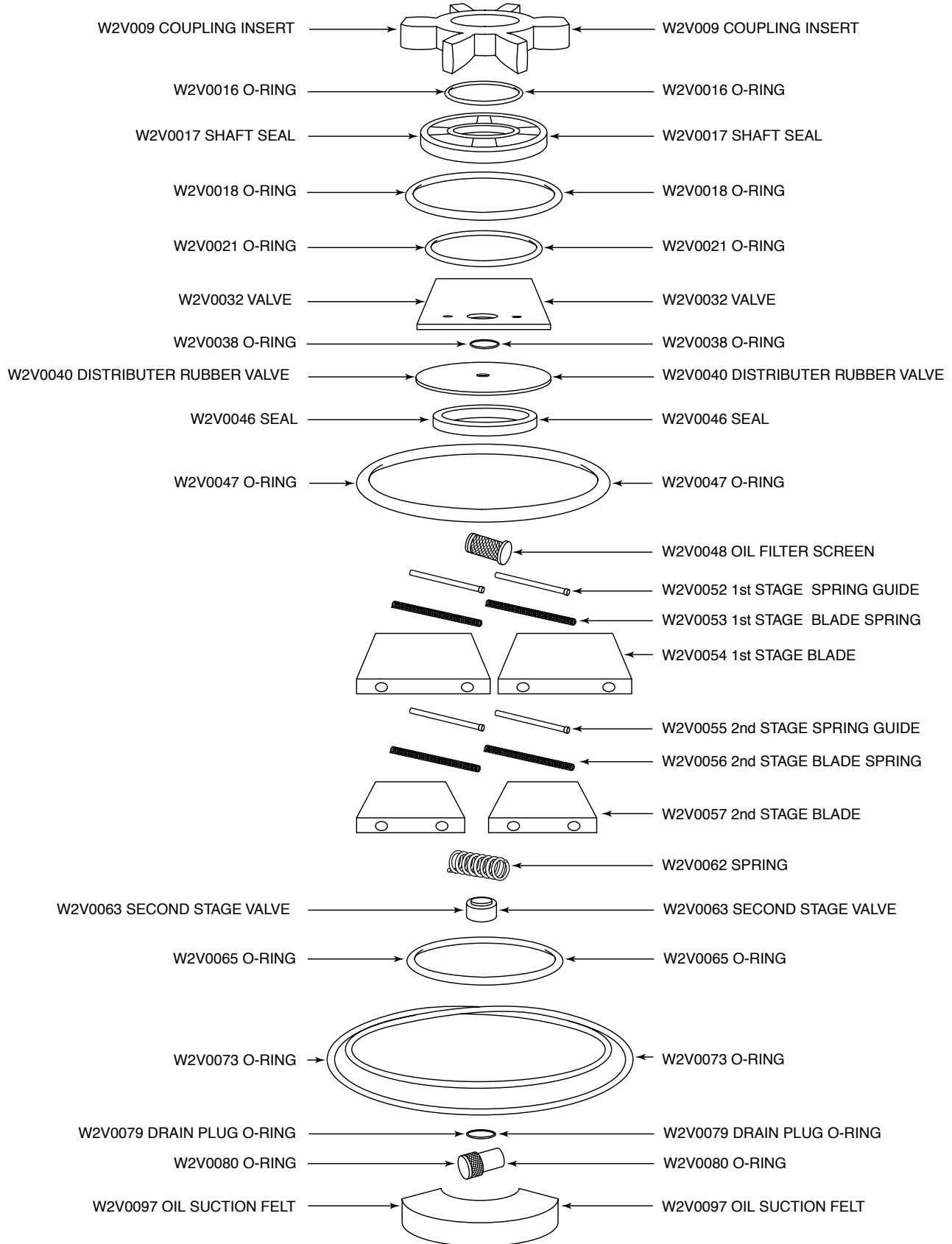
Model 200-7 Spare Parts Kits

Minor Spare Parts Kit for Model 200-7.....P/N RV 900002.....\$115.

Major Spare Parts Kit for Model 200-7.....P/N RV 900200.....\$210.

Minor Kit Includes:

Major Kit Includes:





Model 200-7 Spare Parts Price List

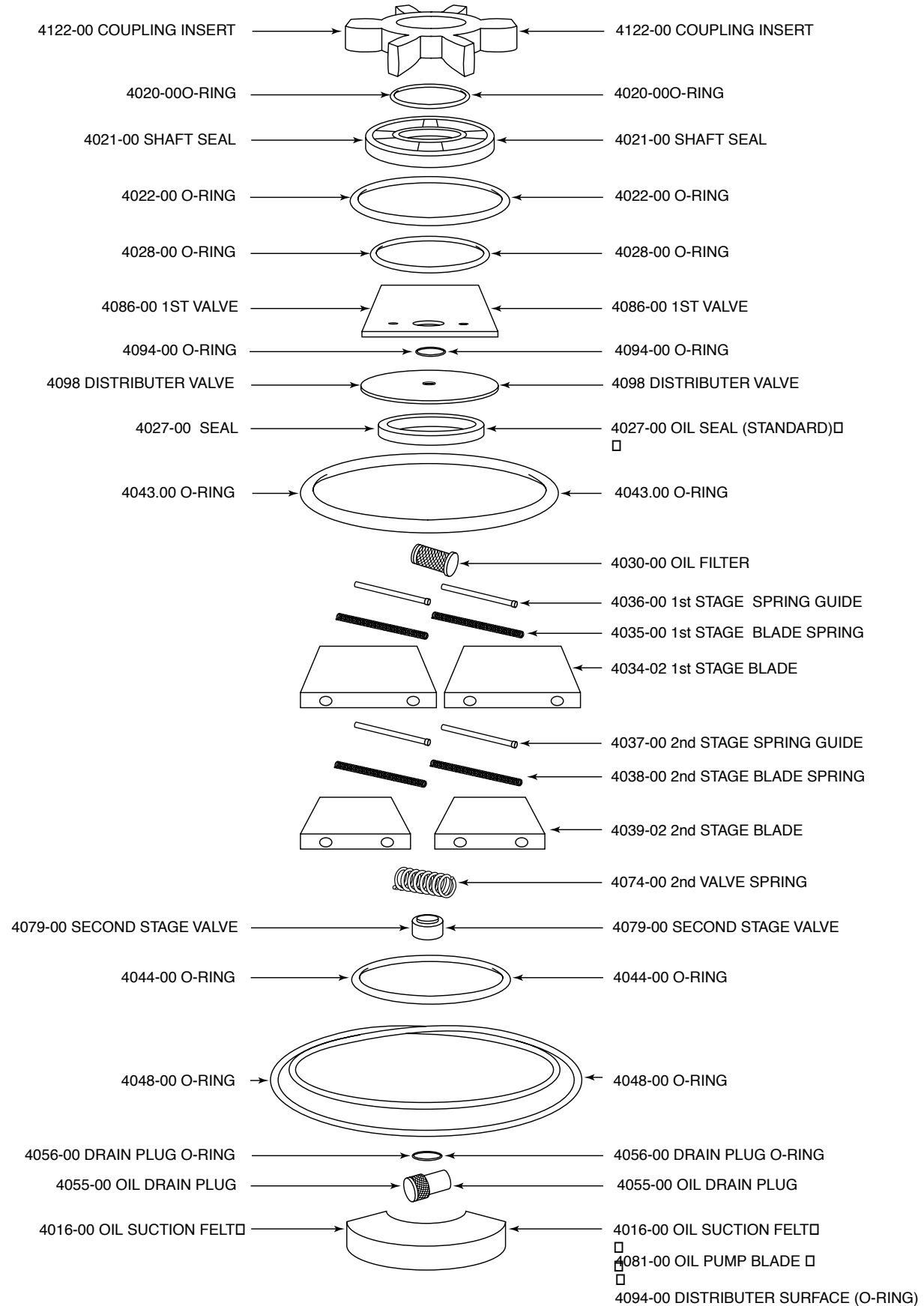
W2V20									
NO	PART_NO.	DESCRIPTION	QTY	LIST PRICE(\$)	NO	PART_NO.	DESCRIPTION	QTY	LIST PRICE(\$)
1	W2V0001	MOTOR	1	228.00	58	W2V0058	TAPPER PIN	2	8.20/PR
2	W2V0002	KEY	2	1.40/PR	59	W2V0059	DISCHARGE BAFFLE	1	12.35
3	W2V0003	MOTOR PLATE	1	55.00	60	W2V0060	BOLT	1	.50
4	W2V0004	PIN	2	1.40/PR	61	W2V0061	SPRING SUPPORT	1	1.90
5	W2V0005	FAN COVER	1	4.90	62	W2V0062	SPRING	1	1.00
6	W2V0006	HANDLE	1	11.00	63	W2V0063	2ND STAGE VALVE	1	7.80
7	W2V0007	COUPLING	1	24.00	64	W2V0064	2ND STAGE STATER	1	351.00
8	W2V0008	FAN	1	10.80	65	W2V0065	O-RING	1	2.60
9	W2V0009	COUPL JOINTING	1	6.30	66	W2V0066	O-RING	1	.50
10	W2V0010	SNAP RING	1	.70	67	W2V0067	END PLATE	1	66.00
11	W2V0011	BOLT	1	.50	68	W2V0068	O-RING	2	2.30/PR
12	W2V0012	SUCTION FELT STRAP	1	2.30	69	W2V0069	GAS BALLAST CLAMP	2	3.10/PR
13	W2V0013	SIDE COVER	2	8.50/2	70	W2V0070	OIL LEVEL BACK PLATE	1	2.10
14	W2V0014	MAIN PLATE	1	130.00	71	W2V0071	OIL LEVEL W1NDOW	1	3.60
15	W2V0015	BASEPLATE	1	18.00	72	W2V0072	O-RING	1	5.30
16	W2V0016	O -RING	1	1.50	73	W2V0073	O-RING	1	4.60
17	W2V0017	OIL SEAL	2	65.00/2	74	W2V0074	EXHAUST ASSEMBLY	1	26.00
18	W2V0018	O-RING	1	2.80	75	W2V0075	O-RING	1	1.75
19	W2V0019	SLEEVE	1	9.60	76	W2V0076	OIL FILLING PLUG	1	1.10
20	W2V0020	STRAINER	1	3.80	77	W2V0077	O-RING	1	2.00
21	W2V0021	O-RING	1	3.70	78	W2V0078	OIL BOX ASSEMBLY	1	116.00
22	W2V0022	NOT USED			79	W2V0079	O-RING	1	1.10
23	W2V0023	INTAKE FLANGE	1	51.00	80	W2V0080	OIL TRAIN PLUG	1	6.50
24	W2V0024	O-RING	2	2.20/PR	81	W2V0081	BOLT	10	1.20
25	W2V0025	BRASS PIN	2	1.20/PR	82	W2V0082	NOT USED		
26	W2V0026	GAS BALLAST SPRING	1	1.20	83	W2V0083	NAME PLATE	1	7.60
27	W2V0027	O-RING	1	.80	84	W2V0084	TERMINAL BOX	1	63.00
28	W2V0028	NOT USED			85	W2V0085	TERMINAL BOX COVER	1	5.50
29	W2V0029	GAS BALLAST KNOB	1	2.20	86	W2V0086	NAME PLATE	1	5.10
30	W2V0030	G/B TUBE ASSEMBLY	1	16.00	87	W2V0087	3 P TERMINAL	1	4.80
31	W2V0031	1ST STAGE STATOR	1	368.00	88	W2V0088	ROTATION MARK	1	.50
32	W2V0032	VALVE	1	15.00	89	W2V0089	POWER CODE PROTECTOR	1	.50
33	W2V0033	VALVE BACK PLATE	1	2.50	90	W2V0090	COVER FIXING BOLT (S/W BOX)	4	1.20/4
34	W2V0034	VALVE SPACER	1	1.20	91	W2V0091	MOTOR PLATE FIXING BOLT	4	1.80/4
35	W2V0035	VALVE SPRING	1	.80	92	W2V0092	MOTOR BODY FIXING BOLT	4	2.00/4
36	W2V0036	WASHER	1	.25	93	W2V0093	HANDLE FIXING BOLT	2	1.00/2
37	W2V0037	BOLT	1	.35	94	W2V0094	COUPLING FIXING BOLT	2	.75/2
38	W2V0038	O-RING	2	.50	95	W2V0095	FAN COVER FIXING BOLT	4	1.75/4
39	W2V0039	DISTRIBUTER SLEEVE	1	1.30	96	W2V0096	SIDE COVER FIXING BOLT	4	2.00/4
40	W2V0040	DISTRIBUTER VALVE	1	16.00	97	W2V0097	OIL SUCTION FELT	1	2.10
41	W2V0041	DISTRIBUTER SPACER	1	1.00	98	W2V0098	SUCTION FELT FIXING BOLT	2	.50/2
42	W2V0042	DISTRIBUTER WEIGHT	1	11.80	99	W2V0099	BASE PLATE MOUNTING BOLT	4	1.75/4
43	W2V0043	SPRING	1	1.00	100	W2V0100	SUCTION FLANGE FIXING BOLT	4	1.00/4
44	W2V0044	WASHER	1	.25	101	W2V0101	VALVE OIL BAFFLE FIX. BOLT	2	.75/2
45	W2V0045	VALVE OIL BAFFLE	1	1.80	102	W2V0102	VALVE GUIDE PIN (ROLL PIN)	4	1.50/4
46	W2V0046	OIL SEAL	1	32.00	103	W2V0103	1 ST STATOR FIX. BOLT	3	1.80/3
47	W2V0047	O-RING	1	4.50	104	W2V0104	SPRING WASHER	3	.75/3
48	W2V0048	OIL FILTER	1	5.40	105	W2V0105	OIL STRAINER FIX. BOLT	2	.50/2
49	W2V0049	OIL FILTER FIXTURE	1	1.00	106	W2V0106	2 ND STAGE STATOR FIX. BOLT	5	2.20/5
50	W2V0050	OIL PUMP BLADE	1	8.00	107	W2V0107	NUT	2	.50/2
51	W2V0051	ROTOR ASSEMBLY	1	365.00	108	W2V0108	DISCHARGE BAFFLE FIX. BOLT	2	.50/2
52	W2V0052	1st STAGE SPRING GUIDE	2	15.20/PR	109	W2V0109	GAS BALLAST FIXING BOLT	2	.50/2
53	W2V0053	1st STAGE BLADE SPRING	2	6.00/PR	110	W2V0110	END PLATE FIXING BOLT	4	1.90/4
54	W2V0054	1st STAGE BLADE	2	61.00/PR	111	W2V0111	OIL BOX ASSY FIXING BOLT	4	2.30/4
55	W2V0055	2ND STAGE SPRING GUIDE	2	15.50/PR	112	W2V0112	BASE RUBBER	4	3.80/4
56	W2V0056	2ND STAGE BLADE SPRING	2	5.80/PR	113	W2V0113	O-RING	1	1.10
57	W2V0057	2ND STAGE BLADE	2	38.00/PR	114	W2V0115	SUS	1	1.80
					115	W2V0078-A	WINDOW COVER	1	6.00

Model 400-14 Spare Parts Kits

Minor Spare Parts Kit for Model 400-14.....P/N RV 900004.....\$431.00
 Major Spare Parts Kit for Model 400-14.....P/N RV 900400.....\$145.00

Minor Kit Includes:

Major Kit Includes:





Model 400-14 Spare Parts Price List

400-14									
NO	PART_NO.	DESCRIPTION	QTY	LIST PRICE(\$)	NO	PART_NO.	DESCRIPTION	QTY	LIST PRICE(\$)
1	4001-00	MOTOR	1	225.00	78	4078-00	NUT, M6	2	.50/2
2	4002-00	KEY, 5 x 5 15R	1	1.25	79	4079-00	2ND STAGE VALVE, □ 14.5 x 7	1	11.00
3	4003-02	MOTOR PLATE, 170 x 197 x 30	1	115.00	80	4080-01	ROTOR ASSEMBLY (1ST)	1	420.00
4	4004-00	MOTOR PLATE FIXING BOLT M6 x 15 WRENCH	4	1.60/4	81	4081-00	OIL PUMP BLADE, 6 x 87 x 21	1	9.00
6	4006-00	COUPLING FAN FIX. BOLT M5x10 (HEX SOCKET SET SCREW)	1	.40	82	4082-00	KEY, 5 x 5 x 15r	1	1.00
7	4007-00	SIDE COVER FIX.. BOLT M4 x 8	4	1.20/4	83	4083-00	ROTOR ASS'Y FIX BOLT M5 x 30 (WRENCH)	4	2.40/4
8	4008-13	SIDE COVER, BLACK COLOR	2	11.00/2	84	4084-00	1ST STAGE STATOR, 125 x 130 x 85	1	3.90
9	4009-00	COUPLING FIXING BOLT M5x10 (HEX SOCKET SET SCREW)	1	.40	85	4085-00	1ST VALVE GUIDE PIN, □ 3 x 20 (SPRING PIN)	2	1.00/2
10	4010-00	SUCTION FELT FIXING BOLT M4 x 8	2	.80/2	86	4086-00	1ST VALVE, 54 x 50 x 3t	1	25.00
11	4011-00	BASE RUBBER FIXING NUT M6	4	1.20/4	87	4087-00	1ST VALVE BACK PLATE, 54 x 50 x 1.6	1	5.00
12	4012-00	WASHER (FLAT TYPE) □ 6 x 16	4	1.20/4	88	4088-00	1ST VALVE SPACER, □ 8 x 6.3 x 13	1	2.40
13	4012-00	BASE RUBBER FIXING BOLT M6 x 20 (WRENCH)	4	2.40/4	89	4089-00	1ST VALVE SPRING, □ 1.2 x 9 x 18	1	1.50
14	4014-00	BASE RUBBER, □ 24 x 12	4	4.00/4	90	4090-00	WASHER (FLAT TYPE), □ 5	1	.50
15	4015-00	SUCTION FELT STRAP, 92 x 1t	1	2.80	91	4091-00	1ST VALVE FIXING BOLT	1	.50
16	4016-00	OIL SUCTION FELT, 47.3 x 93.3	1	2.40	92	4092-00	1ST VALVE OIL BAFFLE, 106 x 147 x 1.2t	1	8.00
17	4016-00	MAIN PLATE, 164 x 205 x 50	1	240.00	93	4093-00	1ST VALVE OIL BAFFLE FIX. BOLT M5 x 8 (WRENCH)	4	1.50/4
18	4018-00	BASE PLATE MOUNTING BOLT M6 x 15	4	2.40/4	94	4094-00	DISTRIBUTER SLEEVE O-RING, P-6	2	1.00/2
19	4019-02	BASE PLATE, 150 X 250 X 15	1	40.00	95	4095-00	DISTRIBUTER SLEEVE AL PIN, □ 5.7 x 10	1	3.50
20	4020-00	O-RING, P-22	1	2.40	96	4096-00	DISTRIBUTER SLEEVE BALL, □ 3.5	1	.50
21	4021-00	OIL SEAL (STANDARD), D-TYPE (□ 18 x 40 x 7t)	2	29.00	97	4097-00	DISTRIBUTER SLEEVE, □ 50	1	5.00
22	4022-00	O-RING, G-45	1	3.00	98	4098-00	DISTRIBUTER VALVE, □ 44.5 x 2.5	1	21.00
23	4023-00	SLEEVE □ 40 x 34 x 9.5t	1	11.00	99	4099-00	DISTRIBUTER SPACER, □ 5.1 x 8 x 16	1	1.50
24	4024-00	SPRING WASHER □ 6	4	1.20/4	100	4100-00	DISTRIBUTER WEIGHT, 44 x 4.5t	1	14.00
25	4025-00	1ST STATOR FIX. BOLT, M6 x 25 (WRENCH)	4	2.40/4	101	4101-00	DISTRIBUTER WEIGHT SPRING □ 6.2/4.6 x WO.8 x 33	1	1.50
26	4026-00	TAPPER PIN □ 5.9 x 6.3 x 7	2	1.20/2	102	4102-00	WASHER FLAT TYPE, □ 5	1	.50
27	4027-00	OIL SEAL, SM (35 x 25 x 7)	1	29.00	103	4103-00	DISTRIBUTER WEIGHT FIX. BOLT, M5 x 45 (WRENCH)	1	.80
28	4028-00	O-RING, S-95	1	3.50	104	4104-00	O-RING, P-6	1	.50
29	4029-00	OIL FILTER RING □ 16 x 3t	1	4.00	105	4105-00	GAS BALLAST SPRING PIN □ 4.5 x 6.2 x 11.5	1	.80
30	4030-00	OIL FILTER □ 13 x 50 x 24#	1	1.20	106	4106-00	GAS BALLAST SPRING, □ 6.2/4.6 x WO.8 x 33	1	1.50
31	4031-00	OIL FILTER CAP □ 13.5 x 0.2T	1	.80	107	4107-00	GAS BALLAST SPRING PIN, □ 4.5 x 6.2 x 11.5	1	.80
32	4032-00	OIL FILTER FIXTURE □ 14 x 33 x 1.7t	1	1.20	108	4108-00	GAS BALLAST KNOB O-RING, □ 17.5 x 11.5 x 2t	1	1.50
33	4033-00	OIL STRAINER FIX. BOLT, M4 X 8 (WRENCH)	2	1.20/2	109	4109-00	GAS BALLAST KNOB, O-RING P-11	1	.80
34	4034-00	1ST STAGE BLADE, 55 x 38 x 6t	2	181.00/2	110	4110-00	GAS BALLAST KNOB □ 40	1	2.20
35	4035-00	1ST STAGE BLADE SPRING □ 3.5 x 2.5 x WO. 5 x 45	2	6.00/2	111	4111-00	STRAINER, □ 0.2 x 32#	1	2.40
36	4036-00	1ST STAGE SPRING GUIDE □ 2.2 x 32	2	15.00/2	112	4112-00	STRAINER RING, □ 17 x 23	1	2.80
37	4037-00	2ND STAGE SPRING GUIDE, □ 2.2 x 32	2	15.00/2	113	4113-00	O-RING, P-30	1	3.50
38	4038-00	2ND STAGE BLADE SPRING □ 3.5 x 2.5 x WO. 5 x 45	2	7.50/2	114	4114-00	INTAKE FLANGE (STANDARD), NW-25	1	28.00
39	4039-00	2ND STAGE BLADE, 40 x 30.5 x 6t	2	105.00/2	116	4116-00	SUCTION FLANGE FIXING BOLT M4 x 12 (WRENCH)	4	3.50
40	4040-00	2ND STAGE STATOR, 125 x 130 x 60	1	330.00	117	4117-00	INTAKE FLANGE CAP, NW-25	1	
41	4041-00	2ND SPRING WASHER, □ 6	6	6.00/6	118	4118-00	SNAP RING, □ 40 (FOR HOLE)	1	.80
42	4042-00	2ND STAGE STATOR FIX. BOLT, M6 X 30	6	3.50/6	121	4121-00	COUPLING, □ 48 x 32	1	26.00
43	4043-00	O-RING, G-70	1	3.50	122	4122-00	COUPLING JOINT, □ 48 x 16	1	7.00
44	4044-00	O-RING, P-6	1	.50	123	4123-00	FAN, □ 120 x 32.3	1	11.00
45	4045-00	END PLATE, 95 x 130 x 20t	1	105.00	124	4124-00	MOTOR PLATE GUIDE PIN, □ 6 x 13	2	3.50/2
46	4046-00	END PLATE PIN 2.9 x 3.3 x 7	1	.80	125	4125-02	HANDLE (COOL GREY), □ 100 x 80 x 20t	1	11.00
47	4047-00	END PLATE FIXING BOLT, M6 x 25 (WRENCH)	5	2.40/5	126	4126-00	HANDLE FIXING BOLT, M6 x 20 (WRENCH)	2	1.50/2
48	4048-00	O-RING, AN-170	1	6.00	127	4127-00	MOTOR PLATE BODY FIXING BOLT M6 x 35 (WRENCH)	4	3.50/4
49	4049-02	OIL BOX ASS'Y, 170 x 198 x 190	1	220.00	128	4128-00	O-RING, AN-048	1	1.60
50	4050-00	OIL BOX ASS'Y FIXING BOLT, M6 x 35 (WRENCH)	4	3.50/4	129	4129-00	TERMINAL BOX FIXING BOLT, M5 x 20 (+)-ROUND	2	.80/2
51	4051-00	OIL LEVEL PLATE, 10 x 95 x 0.2t	1	3.50	130	4130-00	CONDENSER FASTNER, 34 x 49 x 15 x 1t	1	3.50
52	4052-00	O-RING, S-75	1	3.50	131	4131-00	TUBE, □ 12 x 50	1	.50
53	4053-00	OIL LEVEL WINDOW, 31 x 125 x 3t	1	3.50	132	4132-00	3 P TERMINAL, 3P/20A	1	7.00
54	4054-00	OIL LEVEL BACK PLATE, 34 x 129 x 4.5t	1	3.50	133	4133-00	TERMINAL BOX COVER FIX. BOLT M4 x 8 (+)-Cr PLATED	4	3.50/4
55	4055-00	OIL DRAIN PLUG, M-10	1	6.00	134	4134-00	NAME PLATE, 3□ 115/2230v	1	
56	4056-00	O-RING, AN-109	1	2.40	135	4135-02	TERMINAL BOX COVER	1	7.00
57	4057-00	NAME PLATE, 80 x 122 x 0.5t	1	6.00	136	4136-00	3 P TERMINAL FIXING BOLT, M4 x 12 (+)	1	.80
58	4058-00	BOLT, M3.5 x 11 (+)	10	2.40/10	137	4137-00	TERMINAL BOX BUTTON RUBBER, 4 x 49 x 15	1	3.50
60	4060-00	O-RING, 20 x 30 x 2.6t	1	3.50	138	4138-00	ROTATION MARK	1	
61	4061-00	O-RING, P-34	1	3.50	139	4139-00	TERMINAL BOX	1	52.00
62	4062-00	OIL FILLING PLUG, M-24	1	2.40	140	4140-00	POWER CORD PROTECTOR	1	3.50
63	4063-00	EXHAUST ASSEMBLY, NW-25	1	28.00	141	4141-00	BAND FIXING BOLT, M4 x 6 (+)	1	.50
64	4064-00	EXHAUST ASSEMBLY CAP, NW-25	1						
67	4067-00	BOLT, M6 x 30	1	5.00					
68	4068-00	O-RING, P-5	1	.50					
70	4070-00	2ND VALVE GUIDE PIN, □ 3 x 20 (SPRING PIN)	2	1.00/2					
72	4072-00	DISCHARGE BAFFLE FIX BOLT M6 x 25 (WRENCH)	2	1.50/2					
73	4073-00	DISCHARGE BAFFLE, 115 x 106.4 x 1.2t	1	22.00					
74	4074-00	2ND VALVE SPRING, □ 0.5 x 7.2 x 1.7	1	1.50					
75	4075-00	SPRING SUPPORT, □ 34 x 37 x 22.5	1	8.00					
76	4076-00	SPRING SUPPORT FIX BOLT M5 x 20 (WRENCH)	2	1.00/2					
77	4077-00	TAPPER PIN, □ 7 x 40	2	11.00/2					

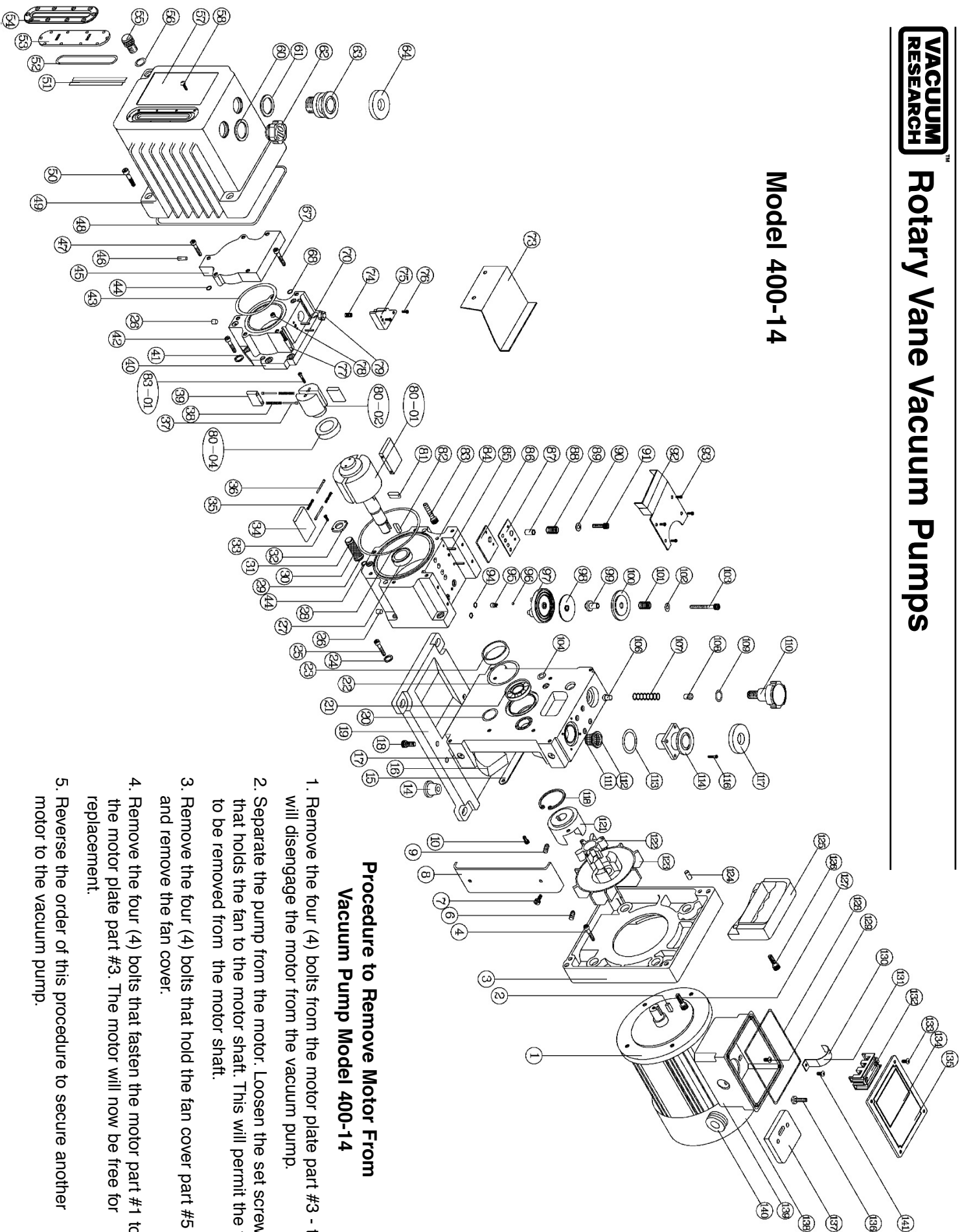
NO	DESCRIPTION	QTY
1	MOTOR	1
2	KEY	1
3	MOTOR PLATE	1
6	COUPLING FAN FIX. BOLT	1
7	SIDE COVER FIX.. BOLT	4
8	SIDE COVER, BLACK COLOR	2
9	COUPLING FIXING BOLT	1
10	SUCTION FELT FIXING BOLT	2
14	BASE RUBBER	4
15	SUCTION FELT STRAP	1
16	OIL SUCTION FELT	1
17	MAIN PLATE	1
18	BASE PLATE MOUNTING BOLT	4
19	BASE PLATE	1
20	O-RING	1
21	OIL SEAL (STANDARD)	2
22	O-RING	1
23	SLEEVE	1
24	SPRING WASHER	4
25	1ST STATOR FIX. BOLT	4
26	TAPPER PIN	2
27	OIL SEAL	1
28	O-RING	1
29	OIL FILTER RING	1
30	OIL FILTER	1
31	OIL FILTER CAP	1
32	OIL FILTER FIXTURE	1
33	OIL STRAINER FIX. BOLT	2
34	1ST STAGE BLADE	2
35	1ST STAGE BLADE SPRING	2
36	1ST STAGE SPRING GUIDE	2
37	2ND STAGE SPRING GUIDE	2
38	2ND STAGE BLADE SPRING	2

NO	DESCRIPTION	QTY
39	2ND STAGE BLADE	2
40	2ND STAGE STATOR	1
41	42ND SPRING WASHER	6
42	2ND STAGE STATOR FIX. BOLT	6
43	O-RING	1
44	O-RING	1
45	END PLATE	1
46	END PLATE PIN	1
47	END PLATE FIXING BOLT	5
48	O-RING	1
49	OIL BOX ASS'Y	1
50	OIL BOX ASS'Y FIXING BOLT	4
51	OIL LEVEL PLATE	1
52	O-RING	1
53	OIL LEVEL WINDOW	1
54	OIL LEVEL BACK PLATE	1
55	OIL DRAIN PLUG	1
56	O-RING	1
57	NAME PLATE	1
58	BOLT	10
60	O-RING	1
61	O-RING	1
62	OIL FILLING PLUG	1
63	EXHAUST ASSEMBLY	1
64	EXHAUST ASSEMBLY CAP	1
67	BOLT	1
68	O-RING, P-5	1
70	2ND VALVE GUIDE PIN	2
73	DISCHARGE BAFFLE	1
74	2ND VALVE SPRING	1
75	SPRING SUPPORT	1
76	SPRING SUPPORT FIX BOLT	2
77	TAPPER PIN	2

NO	DESCRIPTION	QTY
78	NUT	2
79	2ND STAGE VALVE	1
80	ROTOR ASSEMBLY (1ST)	1
80	ROTOR ASSEMBLY (2ND)	1
80	BEARING, 69052	1
81	OIL PUMP BLADE	1
82	KEY	1
83	ROTOR ASS'Y FIX BOLT	4
83	1ST & 2ND ROTOR FIX. BOLT	2
84	1ST STAGE STATOR	1
85	1ST VALVE GUIDE PIN	2
86	1ST VALVE	1
87	1ST VALVE BACK PLATE	1
88	1ST VALVE SPACER	1
89	1ST VALVE SPRING	1
90	WASHER (FLAT TYPE)	1
91	1ST VALVE FIXING BOLT	1
92	1ST VALVE OIL BAFFLE	1
93	1ST VALVE OIL BAFFLE FIX. BOLT	4
94	DISTRIBUTER SLEEVE O-RING	2
95	DISTRIBUTER SLEEVE AL PIN	1
96	DISTRIBUTER SLEEVE BALL	1
97	DISTRIBUTER SLEEVE	1
98	DISTRIBUTER VALVE	1
99	DISTRIBUTER SPACER	1
100	DISTRIBUTER WEIGHT	1
101	DISTRIBUTER WEIGHT SPRING	1
102	WASHER FLAT TYPE	1
103	DISTRIBUTER WEIGHT FIX. BOLT	1
104	O-RING, P-6	1
106	GAS BALLAST SPRING PIN	1
107	GAS BALLAST SPRING	1
108	GAS BALLAST SPRING PIN	1

NO	DESCRIPTION	QTY
109	GAS BALLAST KNOB	1
110	GAS BALLAST KNOB	1
111	STRAINER,	1
112	STRAINER RING	1
113	O-RING	1
114	INTAKE FLANGE (STANDARD)	1
116	SUCTION FLANGE FIXING BOLT	4
117	INTAKE FLANGE CAP	1
118	SNAP RING	1
121	COUPLING	1
122	COUPLING JOINT	1
123	FAN	1
124	MOTOR PLATE GUIDE PIN	2
125	HANDLE (COOL GREY)	1
126	HANDLE FIXING BOLT	2
127	MOTOR PLATE BODY FIXING BOLT	4
128	O-RING	1
129	4TERMINAL BOX FIXING BOLT	2
130	CONDENSER FASTNER	1
131	TUBE	1
132	3 P TERMINAL	1
133	TERMINAL BOX COVER FIX. BOLT	4
134	NAME PLATE	1
135	T.B.C.	1
136	3 P TERMINAL FIXING BOLT	1
137	TERMINAL BOX BOTTOM RUBBER	1
138	ROTATION MARK	1
139	T.B.	1
140	4POWER CORD PROTECTOR	1
141	BAND FIXING BOLT, M4 x 6 (+)	1

Model 400-14



**Procedure to Remove Motor From
Vacuum Pump Model 400-14**

1. Remove the four (4) bolts from the motor plate part #3 - this will disengage the motor from the vacuum pump.
2. Separate the pump from the motor. Loosen the set screw that holds the fan to the motor shaft. This will permit the fan to be removed from the motor shaft.
3. Remove the four (4) bolts that hold the fan cover part #5 and remove the fan cover.
4. Remove the four (4) bolts that fasten the motor part #1 to the motor plate part #3. The motor will now be free for replacement.
5. Reverse the order of this procedure to secure another motor to the vacuum pump.

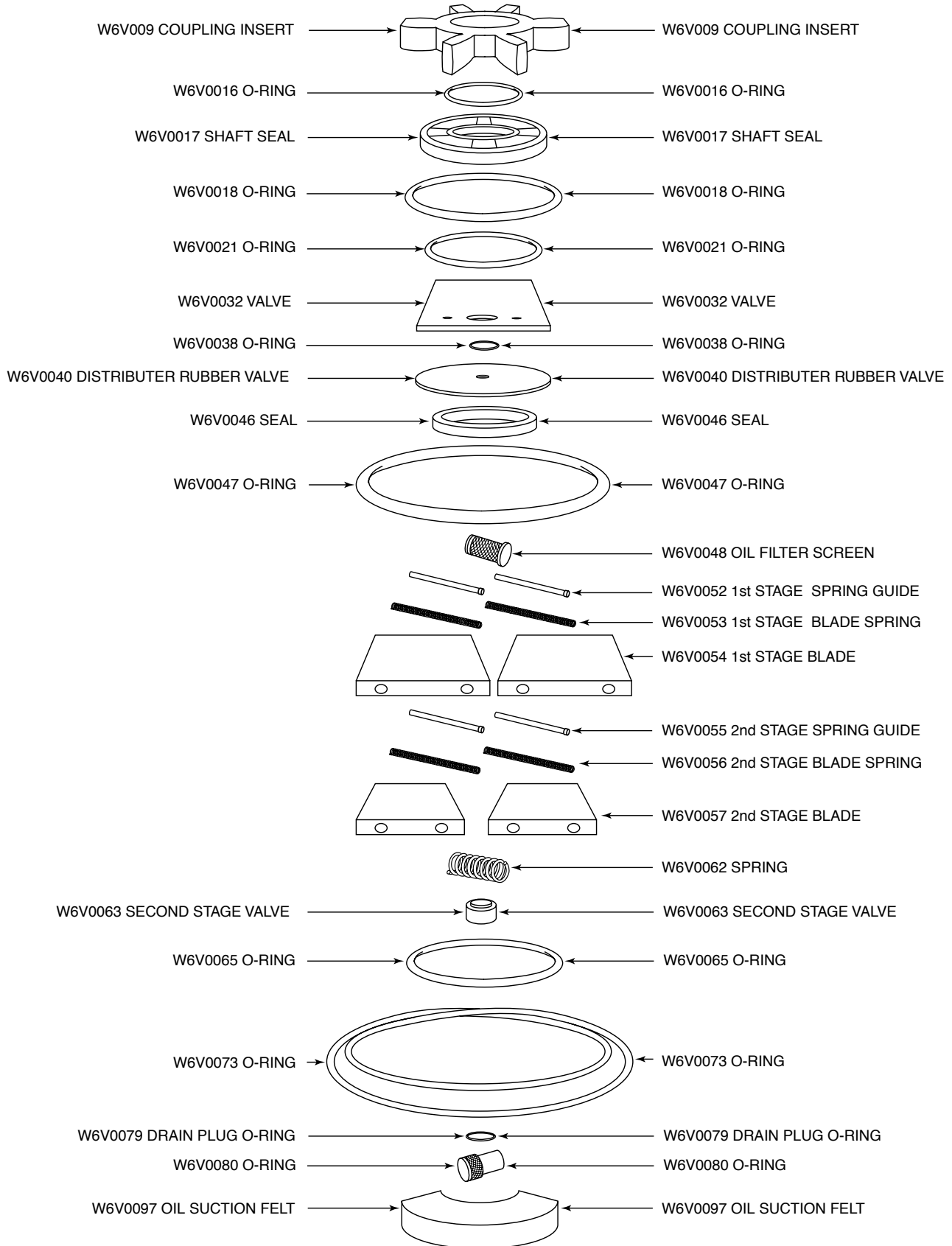


Model 600-21 Spare Parts Kits

Minor Spare Parts Kit for Model 600-21.....P/N RV 900006.....\$155.
 Major Spare Parts Kit for Model 600-21.....P/N RV 900600.....\$815.

Minor Kit Includes:

Major Kit Includes:





Model 600-21 Spare Parts Price List

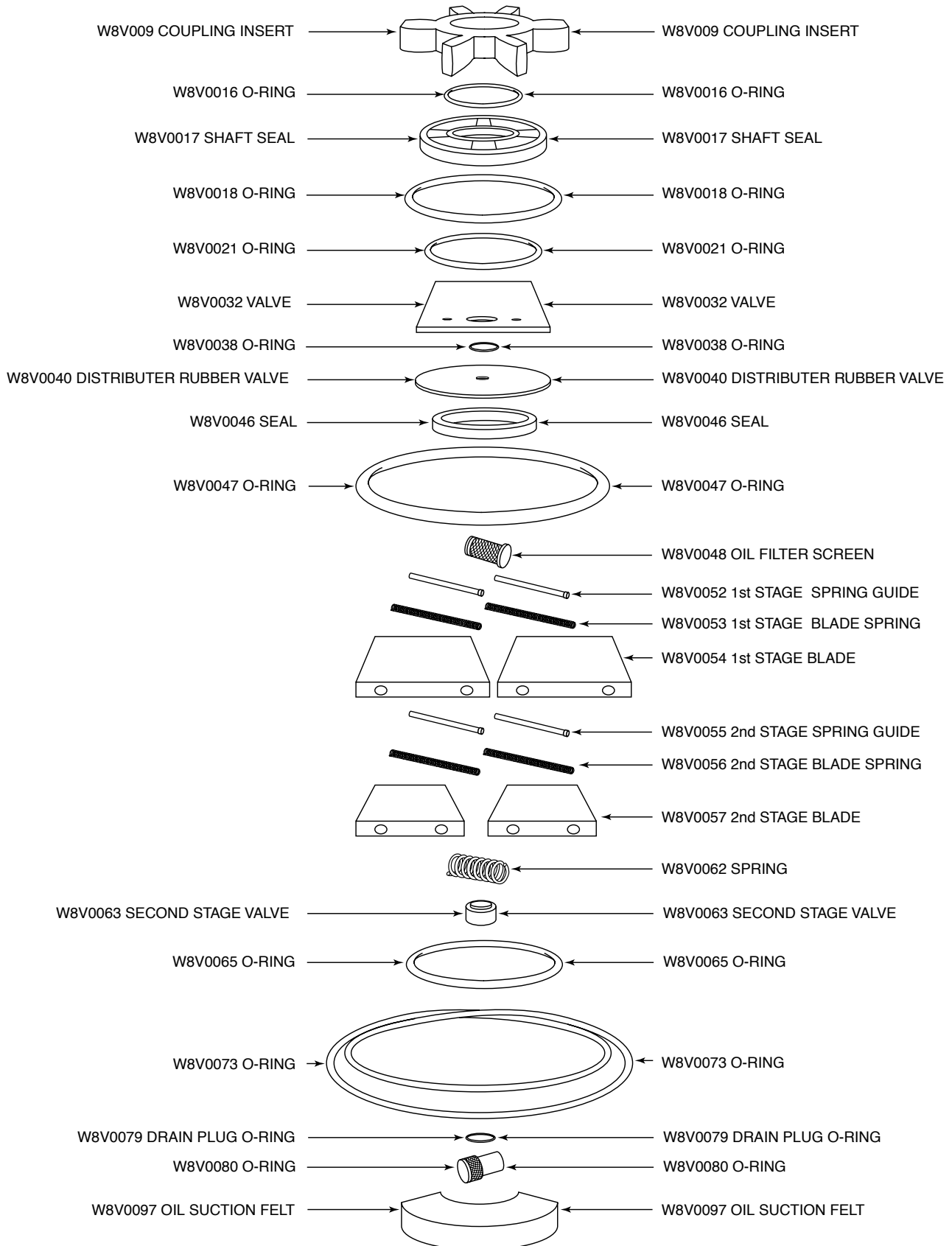
W2V60									
NO	PART NO.	DESCRIPTION	QTY	LIST PRICE(\$)	NO	PART NO.	DESCRIPTION	QTY	LIST PRICE(\$)
1	W6V0001	MOTOR	1	205.00	58	W6V0058	TAPPER PIN	2	8.00/PR
2	W6V0002	KEY	2	1.15	59	W6V0059	DISCHARGE BAFFLE	1	22.10
3	W6V0003	MOTOR PLATE	1	145.00	60	W6V0060	BOLT	2	.65/PR
4	W6V0004	PIN	2	7.00/PR	61	W6V0061	SPRING SUPPORT	2	5.40/PR
5	W6V0005	FAN COVER	1	19.00	62	W6V0062	SPRING	2	1.90/PR
6	W6V0006	HOOK	1	6.90	63	W6V0063	2ND STAGE VALVE	2	16.00/PR
7	W6V0007	COUPLING	1	49.00	64	W6V0064	2ND STAGE STATER		675.00
8	W6V0008	FAN	1	18.00	65	W6V0065	O-RING	1	4.90
9	W6V0009	COUPLING JOINT	1	4.80	66	W6V0066	O-RING	1	.50
10	W6V0010	SNAP RING	1	.75	67	W6V0067	END PLATE	1	290.00
11	W6V0011	BOLT	1	.60	68	W6V0068	O-RING	2	2.30/PR
12	W6V0012	SUCTION FELT STRAP		4.00	69	W6V0069	GAS BALLAST CLAMP	2	2.90/PR
13	W6V0013	SIDE COVER	2	24.00/PR	70	W6V0070	OIL LEVEL BACK PLATE	1	3.10
14	W6V0014	MAIN PLATE	1	325.00	71	W6V0071	OIL LEVEL W1NDOW	1	2.20
15	W6V0015	BASEPLATE	1	105.00	72	W6V0072	O-RING	1	5.20
16	W6V0016	O -RING	1	4.00	73	W6V0073	O-RING	1	11.40
17	W6V0017	OIL SEAL	2	80.00/PR	74	W6V0074	EXHAUST ASSEMBLY	1	71.00
18	W6V0018	O-RING	1	4.10	75	W6V0075	O-RING	1	3.00
19	W6V0019	SLEEVE	1	9.50	76	W6V0076	OIL FILLING PLUG	1	2.50
20	W6V0020	STRAINER	1	14.80	77	W6V0077	O-RING	1	1.50
21	W6V0021	O-RING	1	2.60	78	W6V0078	OIL BOX ASSEMBLY	1	340.00
22	W6V0022	NOT USED			79	W6V0079	O-RING	1	1.20
23	W6V0023	INTAKEFLANGE	1	96.00	80	W6V0080	OIL TRAIN PLUG	1	6.50
24	W6V0024	O-RING	2	2.30/PR	81	W6V0081	BOLT	10	1.10/10
25	W6V0025	BRASS PIN	2	.90/PR	82	W6V0082	TEFLON WASHER	10	2.00/10
26	W6V0026	GAS BALLAST SPRING	1	.90	83	W6V0083	NAME PLATE	1	13.40
27	W6V0027	O-RING	1	.80	84	W6V0084	TERMINAL BOX	1	36.80
28	W6V0028	NOT USED			85	W6V0085	TERMINAL BOX COVER	1	6.40
29	W6V0029	GAS BALLAST KNOB	1	2.30	86	W6V0086	NAME PLATE	1	6.20
30	W6V0030	G/B TUBE ASSEMBLY	1	32.00	87	W6V0087	3 P TERMINAL	1	4.80
31	W6V0031	1ST STAGE STATOR	1	765.00	88	W6V0088	ROTATION MARK	1	.50
32	W6V0032	VALVE	1	46.00	89	W6V0089	POWER CODE PROTECTOR	1	.50
33	W6V0033	VALVE BACK PLATE	1	7.00	90	W6V0090	COVER FIXING BOLT (S/W BOX)	4	.95/4
34	W6V0034	VALVE SPACER	1	3.00/PR	91	W6V0091	MOTOR PLATE FIXING BOLT	4	2.90/4
35	W6V0035	VALVE SPRING	2	4.20/PR	92	W6V0092	MOTOR BODY FIXING BOLT	4	4.00/4
36	W6V0036	WASHER	2	.50/PR	93	W6V0093	NOT USED		
37	W6V0037	BOLT	2	.60/PR	94	W6V0094	COUPLING FIXING BOLT	3	3.40/3
38	W6V0038	O-RING	2	.50/PR	95	W6V0095	FAN COVER FIXING BOLT	4	3.20/4
39	W6V0039	DISTRIBUTER SLEEVE	1	14.00	96	W6V0096	SIDE COVER FIXING BOLT	8	4.60/8
40	W6V0040	DISTRIBUTER VALVE	1	16.00	97	W6V0097	NOT USED		
41	W6V0041	DISTRIBUTER SPACER	1	1.75	98	W6V0098	USED		
42	W6V0042	DISTRIBUTER WEIGHT	1	11.00	99	W6V0099	BASE PLATE MOUNTING BOLT	4	3.20/4
43	W6V0043	SPRING	1	1.00	100	W6V0100	SUCTION FLANGE FIXING BOLT	4	3.50/4
44	W6V0044	WASHER	1	.25	101	W6V0101	VALVE OIL BAFFLE FIX. BOLT	2	.60/2
45	W6V0045	VALVE OIL BAFFLE	1	4.50	102	W6V0102	VALVE GUIDE PIN (ROLL PIN)	6	3.00/6
46	W6V0046	OIL SEAL	1	42.00	103	W6V0103	1 ST STATOR FIX. BOLT	4	3.20/4
47	W6V0047	O-RING	1	7.50	104	W6V0104	SPRING WASHER	3	.70/3
48	W6V0048	OIL FILTER	1	15.00	105	W6V0105	OIL STRAINER FIX. BOLT	2	.50/2
49	W6V0049	OIL FILTER FIXTURE	1	1.90	106	W6V0106	2 ND STAGE STATOR FIX. BOLT	6	3.40/6
50	W6V0050	OIL PUMP BLADE	1	9.20	107	W6V0107	NUT	2	.50/2
51	W6V0051	ROTOR ASSEMBLY	1	6.90.00	108	W6V0108	NOT USED		
52	W6V0052	1st STAGE SPRING GUIDE	2	45.00/PR	109	W6V0109	GAS BALLAST FIXING BOLT	2	.60/2
53	W6V0053	1st STAGE BLADE SPRING	2	18.00/PR	110	W6V0110	END PLATE FIXING BOLT	5	2.80/5
54	W6V0054	1st STAGE BLADE	2	384.00/PR	111	W6V0111	OIL BOX ASSY FIXING BOLT	4	3.80/4
55	W6V0055	2ND STAGE SPRING GUIDE	2	38.00/PR	112	W6V0112	NOT USED		1.20
56	W6V0056	2ND STAGE BLADE SPRING	2	16.00/PR	113	W6V0113	O-RING	1	
57	W6V0057	2ND STAGE BLADE	2	195.00/PR					

Model 800-28 Spare Parts Kits

Minor Spare Parts Kit for Model 800-28.....P/N RV 900008.....\$160.
 Major Spare Parts Kit for Model 800-28.....P/N RV 900800.....\$890.

Minor Kit Includes:

Major Kit Includes:





Model 800-28 Spare Parts Price List

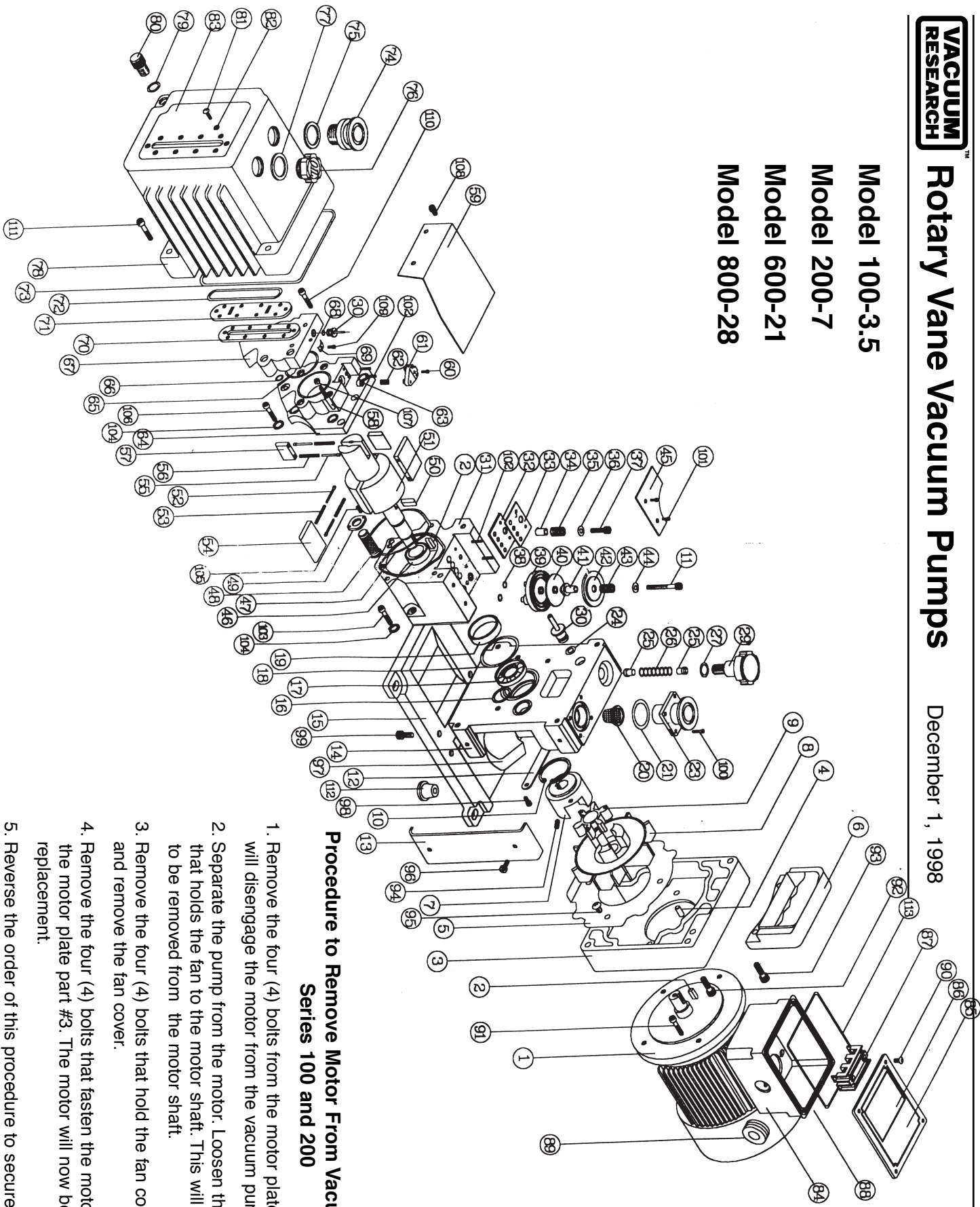
W2V80									
NO	PART NO.	DESCRIPTION	QTY	LIST PRICE(\$)	NO	PART NO.	DESCRIPTION	QTY	LIST PRICE(\$)
1	W8V0001	MOTOR	1	205.00	58	W8V0058	TAPPER PIN	2	8.50/2
2	W8V0002	KEY	2	1.15	59	W8V0059	DISCHARGE BAFFLE	1	28.00
3	W8V0003	MOTOR PLATE	1	145.00	60	W8V0060	BOLT	2	.70/2
4	W8V0004	PIN	2	7.00/PR	61	W8V0061	SPRING SUPPORT	2	6.00/2
5	W8V0005	FAN COVER	1	19.00	62	W8V0062	SPRING	2	2.00/2
6	W8V0006	HOOK	1	6.90	63	W8V0063	2ND STAGE VALVE	2	16.00/2
7	W8V0007	COUPLING	1	49.00	64	W8V0064	2ND STAGE STATER	1	680.00
8	W8V0008	FAN	1	18.00	65	W8V0065	O-RING	1	4.50
9	W8V0009	COUPLING JOINT	1	4.80	66	W8V0066	O-RING	1	.50
10	W8V0010	SNAP RING	1	.75	67	W8V0067	END PLATE	1	280.00
11	W8V0011	BOLT	1	.60	68	W8V0068	O-RING	2	2.40/2
12	W8V0012	SUCTION FELT STRAP		4.00	69	W8V0069	GAS BALLAST CLAMP	2	3.20/2
13	W8V0013	SIDE COVER	2	24.00/PR	70	W8V0070	OIL LEVEL BACK PLATE	1	3.60
14	W8V0014	MAIN PLATE	1	325.00	71	W8V0071	OIL LEVEL WINDOW	1	2.40
15	W8V0015	BASEPLATE	1	105.00	72	W8V0072	O-RING	1	6.00
16	W8V0016	O -RING	1	4.00	73	W8V0073	O-RING	1	11.00
17	W8V0017	OIL SEAL	2	80.00/PR	74	W8V0074	EXHAUST ASSEMBLY	1	68.00
18	W8V0018	O-RING	1	4.10	75	W8V0075	O-RING	1	3.00
19	W8V0019	SLEEVE	1	9.50	76	W8V0076	OIL FILLING PLUG	1	2.60
20	W8V0020	STRAINER	1	14.80	77	W8V0077	O-RING	1	1.60
21	W8V0021	O-RING	1	2.60	78	W8V0078	OIL BOX ASSEMBLY	1	340.00
22	W8V0022	NOT USED			79	W8V0079	O-RING	1	1.20
23	W8V0023	INTAKE FLANGE	1	96.00	80	W8V0080	OIL TRAIN PLUG	1	7.00
24	W8V0024	O-RING	2	2.30/PR	81	W8V0081	BOLT	10	1.80/10
25	W8V0025	BRASS PIN	2	.90/PR	82	W8V0082	TEFLON WASHER	10	2.20/10
26	W8V0026	GAS BALLAST SPRING	1	.90	83	W8V0083	NAME PLATE	1	11.00
27	W8V0027	O-RING	1	.80	84	W8V0084	TERMINAL BOX	1	38.00
28	W8V0028	NOT USED			85	W8V0085	TERMINAL BOX COVER	1	7.00
29	W8V0029	GAS BALLAST KNOB	1	2.30	86	W8V0086	NAME PLATE	1	6.00
30	W8V0030	G/B TUBE ASSEMBLY	1	32.00	87	W8V0087	3 P TERMINAL	1	4.50
31	W8V0031	1ST STAGE STATOR	1	765.00	88	W8V0088	ROTATION MARK	1	.50
32	W8V0032	VALVE	1	46.00	89	W8V0089	POWER CODE PROTECTOR	1	.50
33	W8V0033	VALVE BACK PLATE	1	7.00	90	W8V0090	COVER FIXING BOLT (S/W BOX)	4	3.00/4
34	W8V0034	VALVE SPACER	2	3.00/PR	91	W8V0091	MOTOR PLATE FIXING BOLT	4	3.50/4
35	W8V0035	VALVE SPRING	2	4.20/PR	92	W8V0092	MOTOR BODY FIXING BOLT	4	4.00/4
36	W8V0036	WASHER	2	.50/PR	93	W8V0093	NOT USED		
37	W8V0037	BOLT	2	.60/PR	94	W8V0094	COUPLING FIXING BOLT	3	1.40/3
38	W8V0038	O-RING	2	.50/PR	95	W8V0095	FAN COVER FIXING BOLT	4	3.20/4
39	W8V0039	DISTRIBUTER SLEEVE	1	14.00	96	W8V0096	SIDE COVER FIXING BOLT	8	5.00/8
40	W8V0040	DISTRIBUTER VALVE	1	16.00	97	W8V0097	NOT USED		
41	W8V0041	DISTRIBUTER SPACER	1	1.75	98	W8V0098	NOT USED		
42	W8V0042	DISTRIBUTER WEIGHT	1	11.00	99	W8V0099	BASE PLATE MOUNTING BOLT	4	3.20/4
43	W8V0043	SPRING	1	1.00	100	W8V0100	SUCTION FLANGE FIXING BOLT	4	1.60/4
44	W8V0044	WASHER	1	.25	101	W8V0101	VALVE OIL BAFFLE FIX. BOLT	2	.50/2
45	W8V0045	VALVE OIL BAFFLE	1	4.50	102	W8V0102	VALVE GUIDE PIN (ROLL Pfn)	6	1.50/6
46	W8V0046	OIL SEAL	1	42.00	103	W8V0103	1 ST STATOR FIX. BOLT	4	3.20/4
47	W8V0047	O-RING	1	7.50	104	W8V0104	SPRING WASHER	3	.70/3
48	W8V0048	OIL FILTER	1	15.00	105	W8V0105	OIL STRAINER FIX. BOLT	2	.50/2
49	W8V0049	OIL FILTER FIXTURE	1	1.90	106	W8V0106	2 ND STAGE STATOR FIX. BOLT	6	3.50/6
50	W8V0050	OIL PUMP BLADE	1	9.20	107	W8V0107	NUT	2	.50/2
51	W8V0051	ROTOR ASSEMBLY	1	6.90.00	108	W8V0108	NOT USED		
52	W8V0052	1st STAGE SPRING GUIDE	2	45.00PR	109	W8V0109	GAS BALLAST FIXING BOLT	2	.70/2
53	W8V0053	1st STAGE BLADE SPRING	2	18.00/PR	110	W8V0110	END PLATE FIXING BOLT	5	3.10/5
54	W8V0054	1st STAGE BLADE	2	384.00/PR	111	W8V0111	OIL BOX ASSY FIXING BOLT	4	2.20/4
55	W8V0055	2ND STAGE SPRING GUIDE	2	38.00/PR	112	W8V0112	NOT USED		
56	W8V0056	2ND STAGE BLADE SPRING	2	16.00/PR	113	W8V0113	O-RING	1	1.60
57	W1V0057	2ND STAGE BLADE	2	195.00/PR					

NO	DESCRIPTION	QTY
1	MOTOR	1
2	KEY	2
3	MOTOR PLATE	1
4	PIN	2
5	FAN COVER	1
6	HANDLE	1
7	COUPLING	1
8	FAN	1
9	COUPL. JOINTING	1
10	SNAP RING	1
11	BOLT	1
12	SUCTION FELT STRAP	1
13	SIDE COVER	1
14	MAIN PLATE	1
15	BASE PLATE	1
16	O-RING	1
17	OIL SEAL	2
18	O-RING	1
19	SLEEVE	1
20	STRAINER	1
21	O-RING	1
22		
23	INTAKE FLANGE	1
24	O-RING	2
25	BRASS PIN	2
26	GAS BALLAST SPRING	1
27	O-RING	1
28		
29	GAS BALLAST KNOB	1
30	G/B TUBE ASSEMBLY	1
31	1 ST STAGE STATOR	1
32	VALVE	1
33	VALVE BACK PLATE	1
34	VALVE SPACER	1
35	VALVE SPRING	1
36	WASHER	1
37	BOLT	1
38	O-RING	2

NO	DESCRIPTION	QTY
39	DISTRIBUTER SLEEVE	1
40	DISTRIBUTER VALVE	1
41	DISTRIBUTER SPACER	1
42	DISTRIBUTER WEIGHT	1
43	SPRING	1
44	WASHER	1
45	VALVE OIL BAFFLE	1
46	OIL SEAL	1
47	O-RING	1
48	OIL FILTER	1
49	OIL FILTER FIXTURE	1
50	OIL PUMP BLADE	1
51	ROTOR ASSEMBLY	1
52	1 ST STAGE SPRING GUIDE	2
53	1 ST STAGE BLADE SPRING	2
54	1 ST STAGE BLADE	2
55	2 ND STAGE SPRING GUIDE	2
56	2 ND STAGE BLADE SPRING	2
57	2 ND STAGE BLADE	2
58	TAPPER PIN	2
59	DISCHARGE BAFFLE	1
60	BOLT	1
61	SPRING SUPPORT	1
62	SPRING	1
63	2 ND STAGE VALVE	1
64	2 ND STAGE STATER	1
65	O-RING	1
66	O-RING	1
67	END PLATE	1
68	O-RING	2
69	GAS BALLAST CLAMP	2
70	OIL LEVEL BACK PLATE	1
71	OIL LEVEL WINDOW	1
72	O-RING	1
73	O-RING	1
74	EXHAUST ASSEMBLY	1
75	O-RING	1
76	OIL FILLING PLUG	1

NO	DESCRIPTION	QTY
77	O-RING	1
78	OIL BOX ASSEMBLY	1
79	O-RING	1
80	OIL TRAIN PLUG	1
81	BOLT	10
82		
83	NAME PLATE	1
84	TERMINAL BOX	1
85	TERMINAL BOX COVER	1
86	NAME PLATE	1
87	3 P TERMINAL	1
88	ROTATION MARK	1
89	POWER CODE PROTECTOR	1
90	COVER FIXING BOLT (S/W BOX)	4
91	MOTOR PLATE FIXING BOLT	4
92	MOTOR BODY FIXING BOLT	4
93	HANDLE FIXING BOLT	2
94	COUPLING FIXING BOLT	2
95	FAN COVER FIXING BOLT	4
96	SIDE COVER FIXING BOLT	4
97	OIL SUCTION FELT	1
98	SUCTION FELT FIXING BOLT	2
99	BASE PLATE MOUNTING BOLT	4
100	SUCTION FLANGE FIXING BOLT	4
101	VALVE OIL BAFFLE FIXING BOLT	2
102	VALVE GUIDE PIN (ROLL PIN)	4
103	1 ST STATOR FIXING BOLT	3
104	SPRING WASHER	3
105	OIL STRAINER FIXING BOLT	2
106	2 ND STAGE STATOR FIXING BOLT	5
107	NUT	2
108	DISCHARGE BAFFLE FIX. BOLT	2
109	GAS BALLAST FIXING BOLT	2
110	END PLATE FIXING BOLT	4
111	OIL BOX ASSY. FIXING BOLT	4
112	BASE RUBBER	4
113	O-RING	1
114	WINDOW COVER	1

Model 100-3.5
Model 200-7
Model 600-21
Model 800-28



**Procedure to Remove Motor From Vacuum Pumps
 Series 100 and 200**

1. Remove the four (4) bolts from the motor plate part #3 - this will disengage the motor from the vacuum pump.
2. Separate the pump from the motor. Loosen the set screw that holds the fan to the motor shaft. This will permit the fan to be removed from the motor shaft.
3. Remove the four (4) bolts that hold the fan cover part #5 and remove the fan cover.
4. Remove the four (4) bolts that fasten the motor part #1 to the motor plate part #3. The motor will now be free for replacement.
5. Reverse the order of this procedure to secure another motor to the vacuum pump.

**Vacuum Research Ltd. • 2419 Smallman Street • Pittsburgh, PA 15222 USA • www.vacuumresearch.com
Phone: 800-426-9340 • 412-261-7630 • FAX: 412-261-7220 • e-mail: VRL@vacuumresearch.com**

printed 7/04